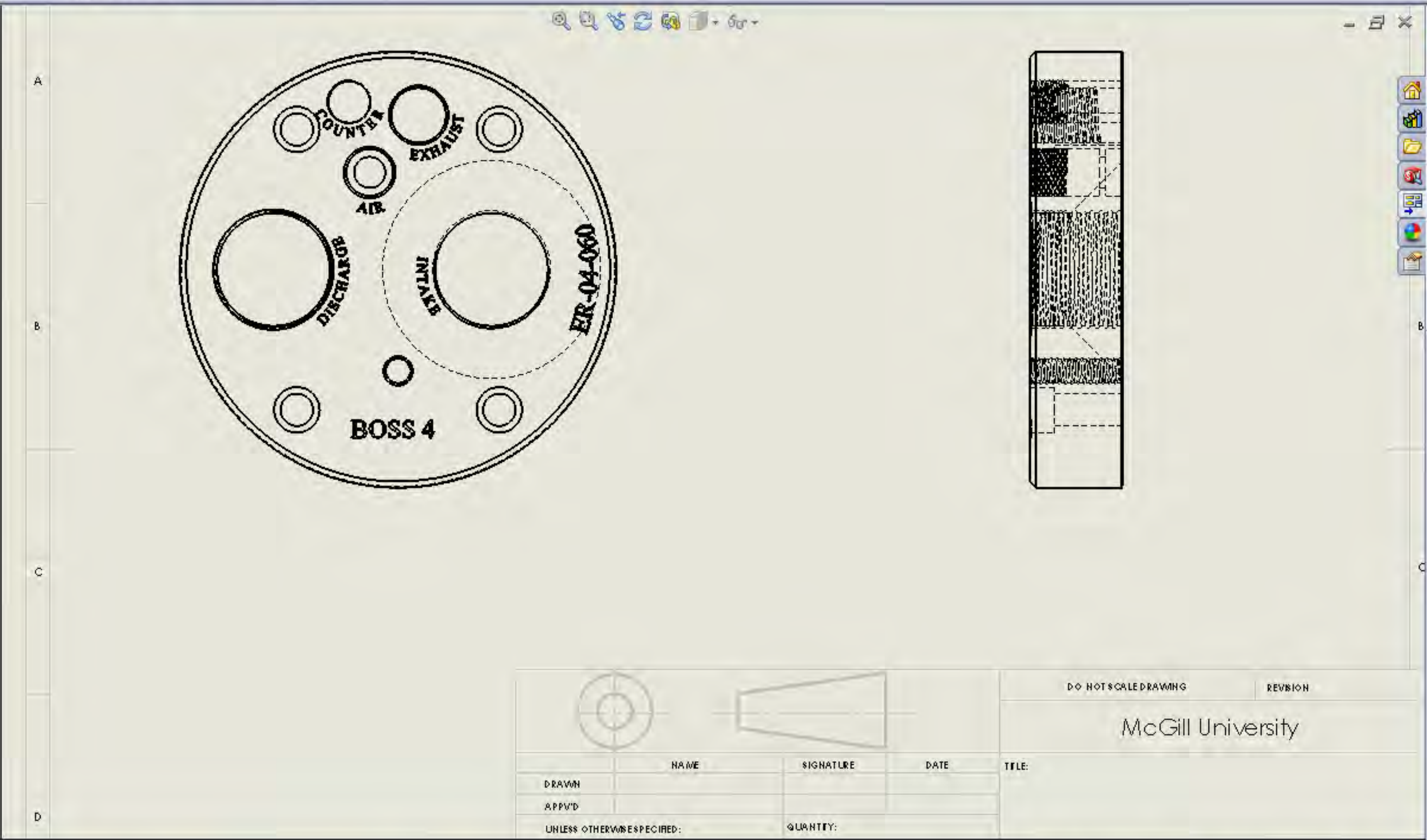


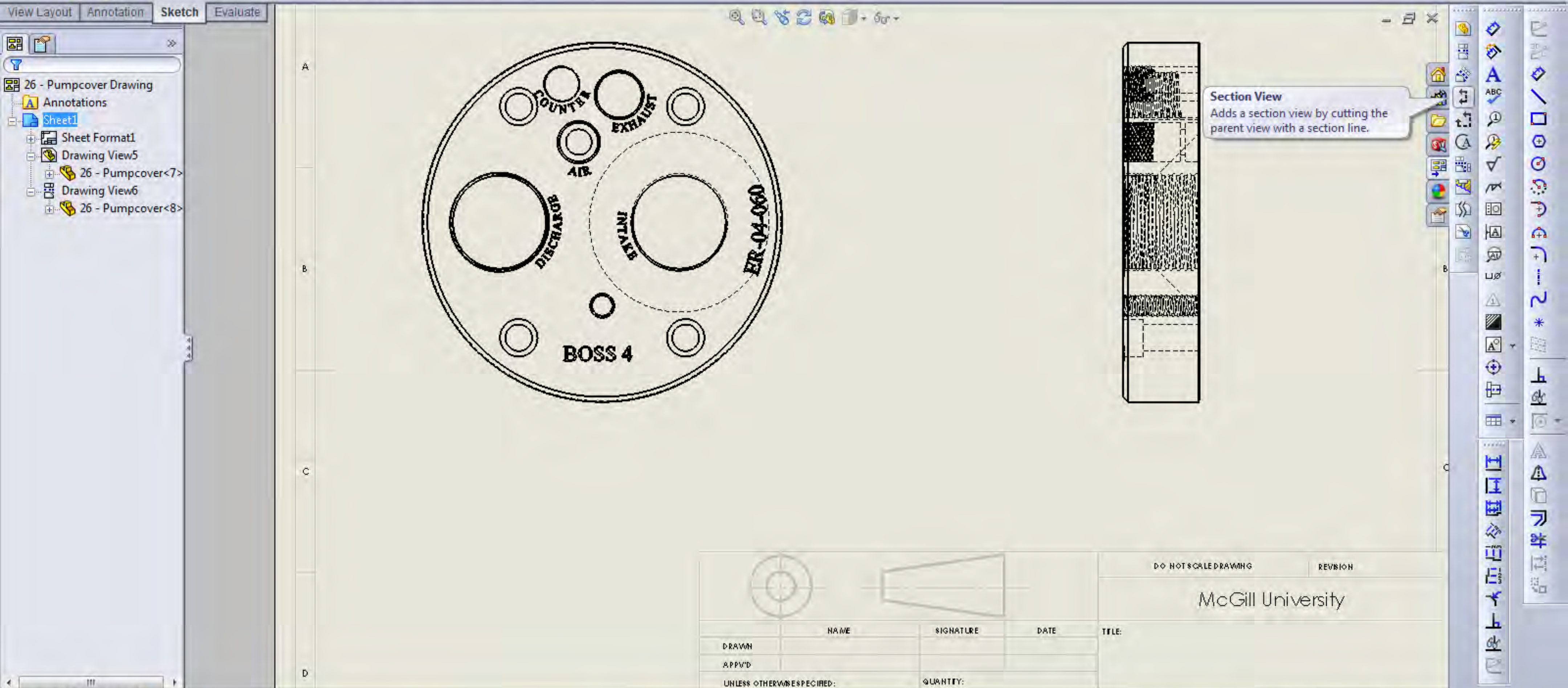
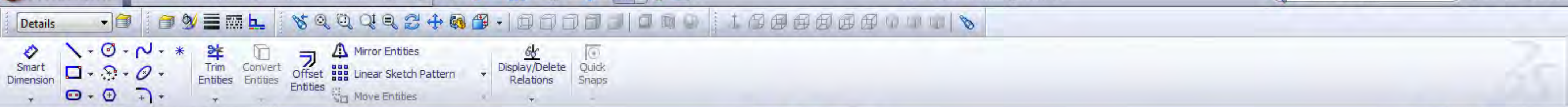
View Layout Annotation Sketch Evaluate

26 - Pumpcover Drawing

- Annotations
- Sheet1
- Sheet Format1
- Drawing View5
- 26 - Pumpcover<7>
- Drawing View6
- 26 - Pumpcover<8>



DO NOT SCALE DRAWING				REVISION
McGill University				
NAME	SIGNATURE	DATE	TITLE:	
DRAWN				
APP'D				
UNLESS OTHERWISE SPECIFIED:		QUANTITY:		



Details

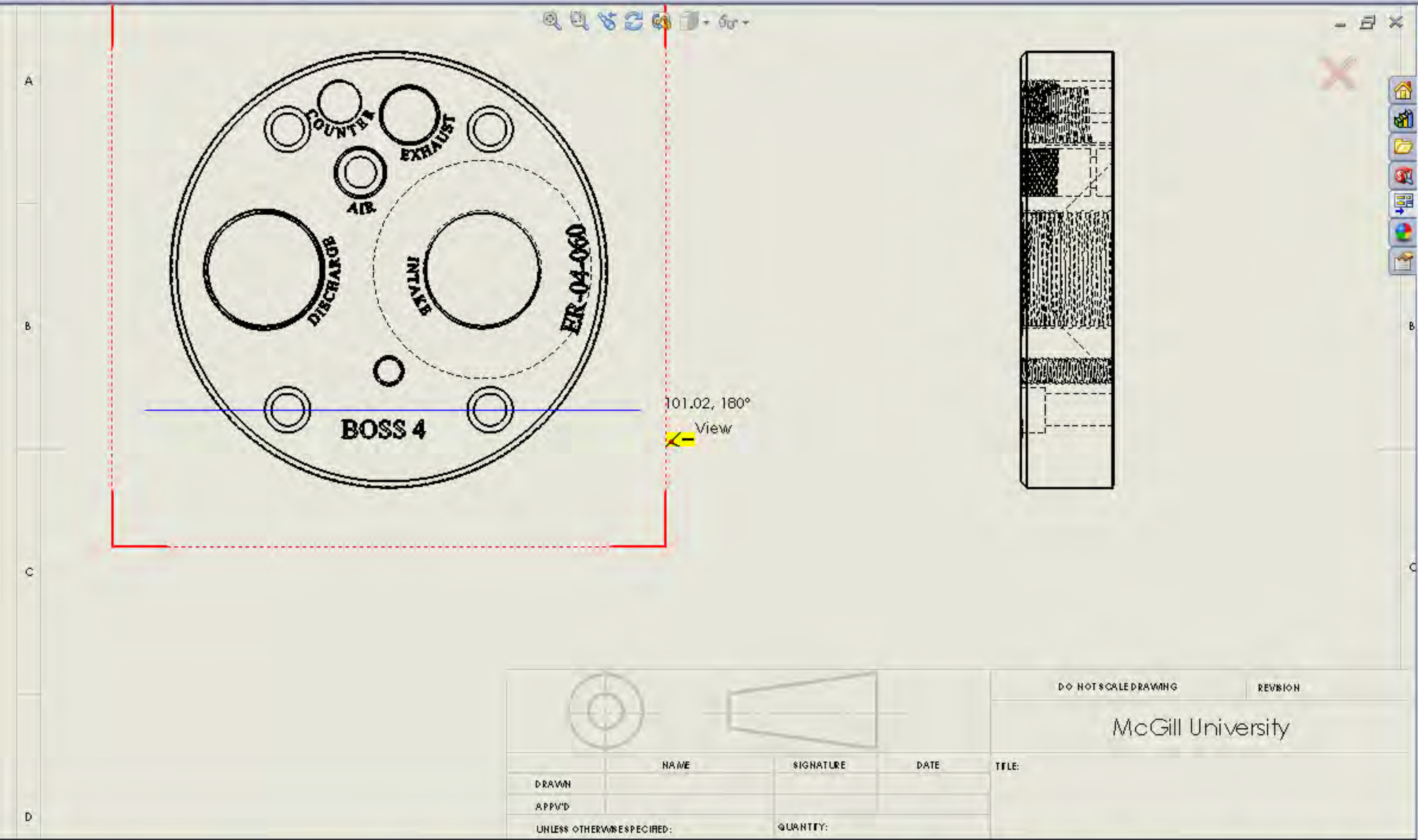
Smart Dimension, Trim Entities, Convert Entities, Offset Entities, Mirror Entities, Linear Sketch Pattern, Display/Delete Relations, Quick Snaps

View Layout Annotation Sketch Evaluate

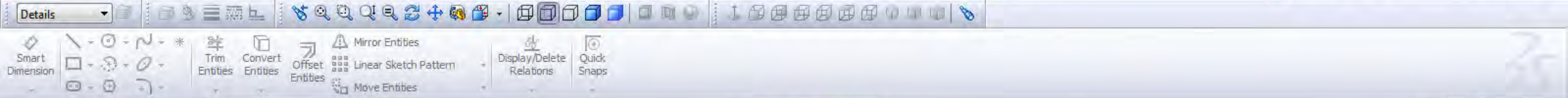
Section View

Message

Please sketch a line on a drawing view to create a Section View.



DO NOT SCALE DRAWING				REVISION
McGill University				
NAME	SIGNATURE	DATE	TITLE:	
DRAWN				
APP'D				
UNLESS OTHERWISE SPECIFIED:		QUANTITY:		



Section View A-A

Message: Click in the graphics area to place the new view.

Section Line

- ☐ Flip direction
- A-A
- ☒ Document font
- Font...

Section View

- ☐ Partial section
- ☐ Display only cut face(s)
- ☐ Auto hatching
- ☐ Display surface bodies

Section Depth

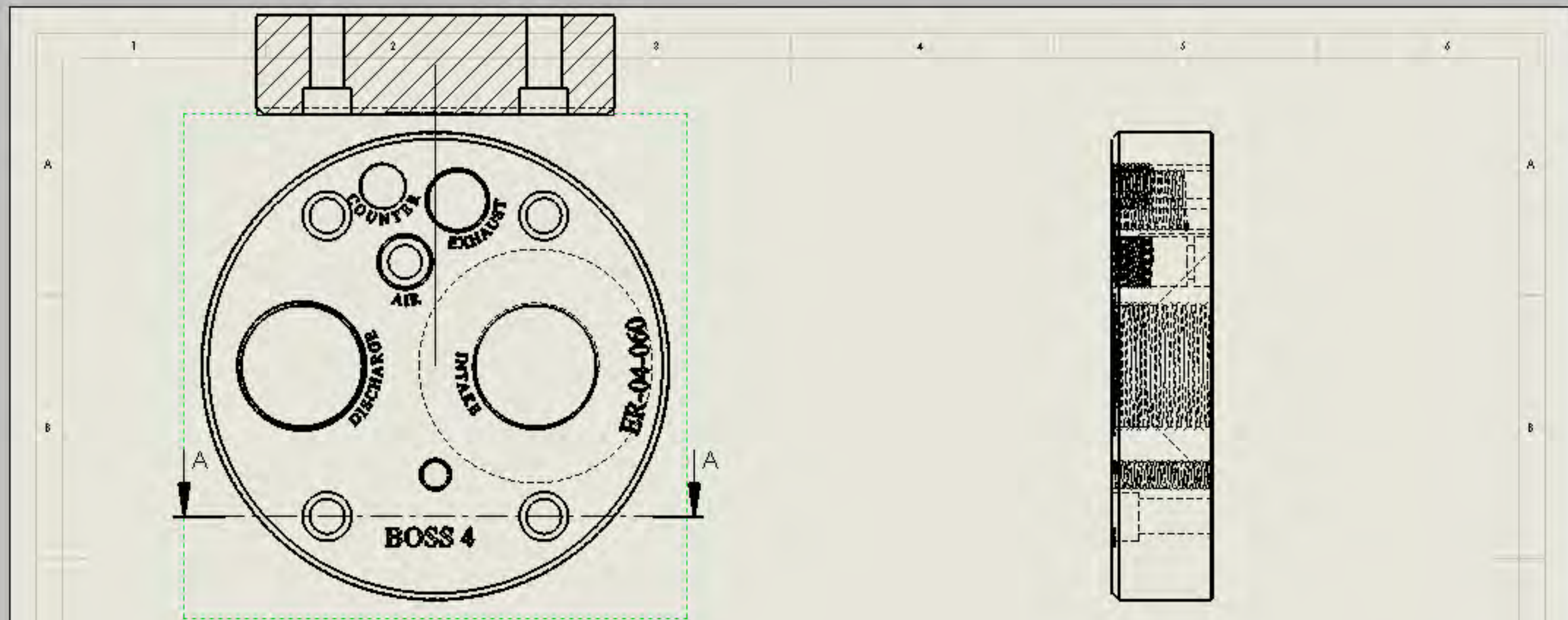
Import annotation from

Annotation view(s):

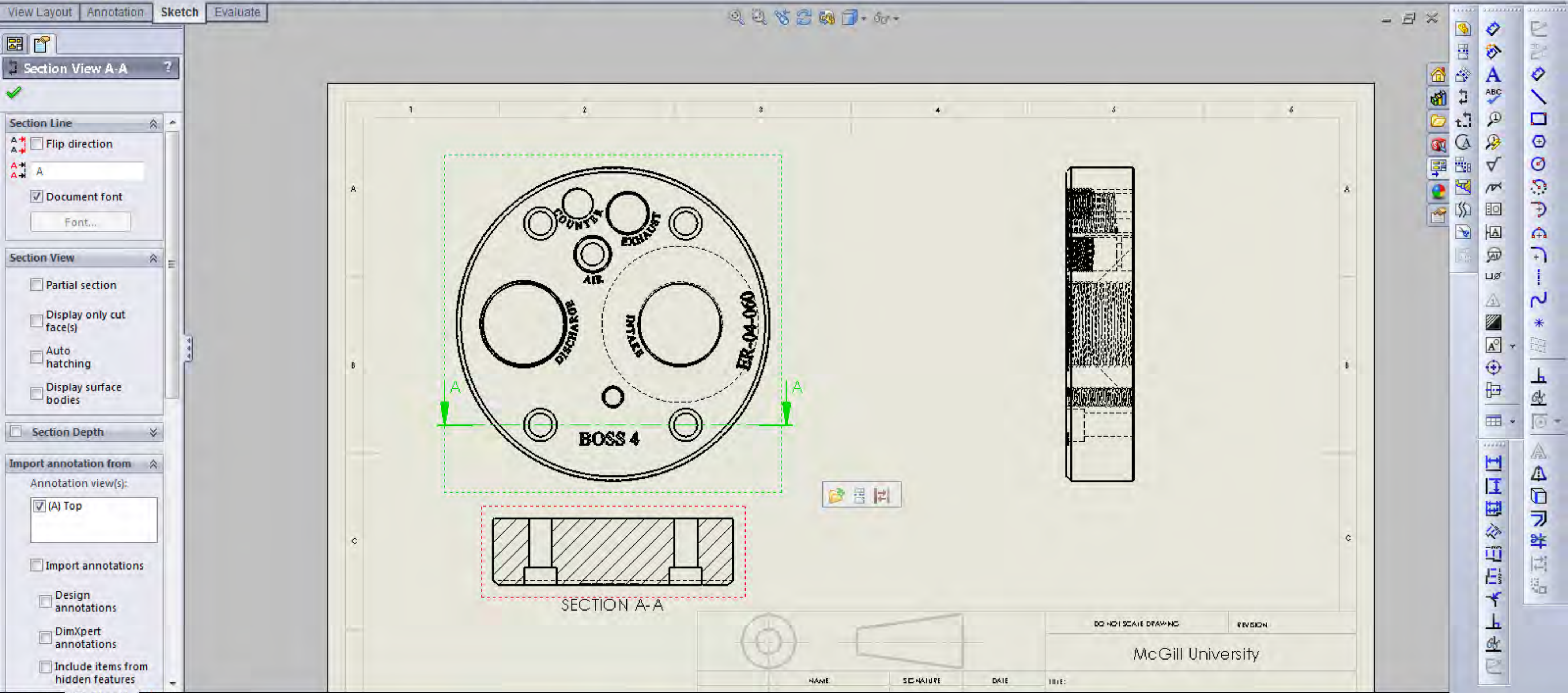
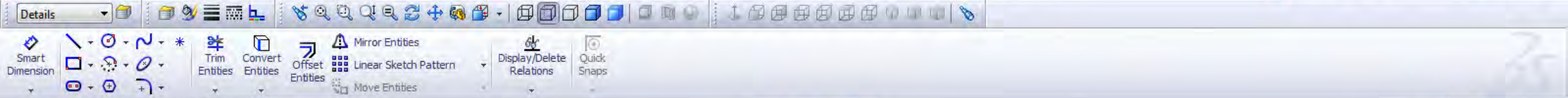
- ☒ (A) Top

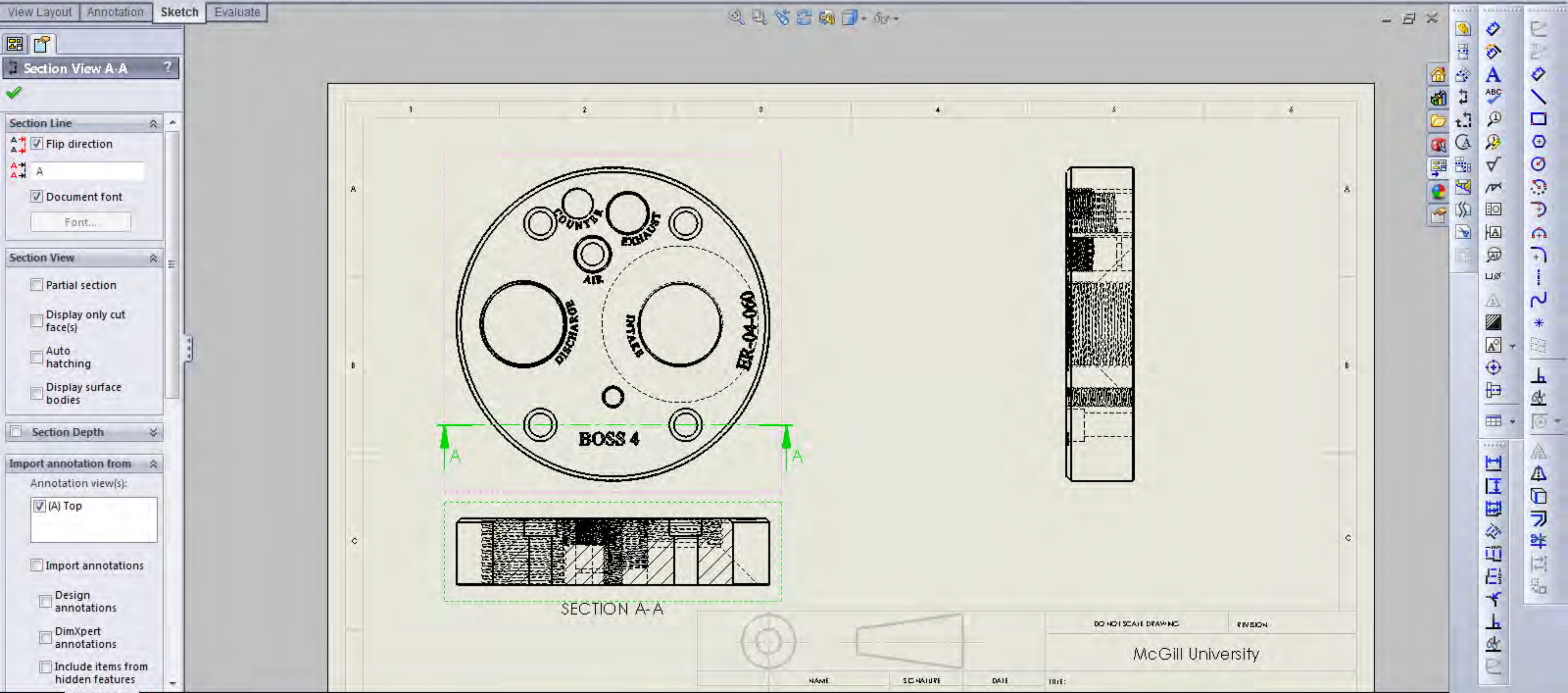
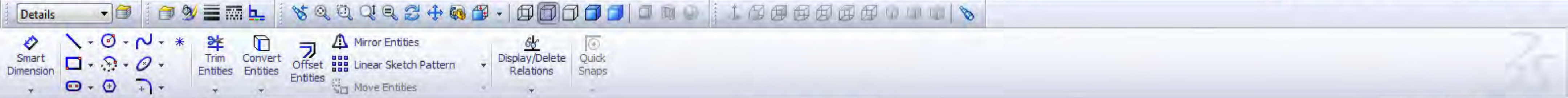
☐ Import annotations

☐ Design annotations

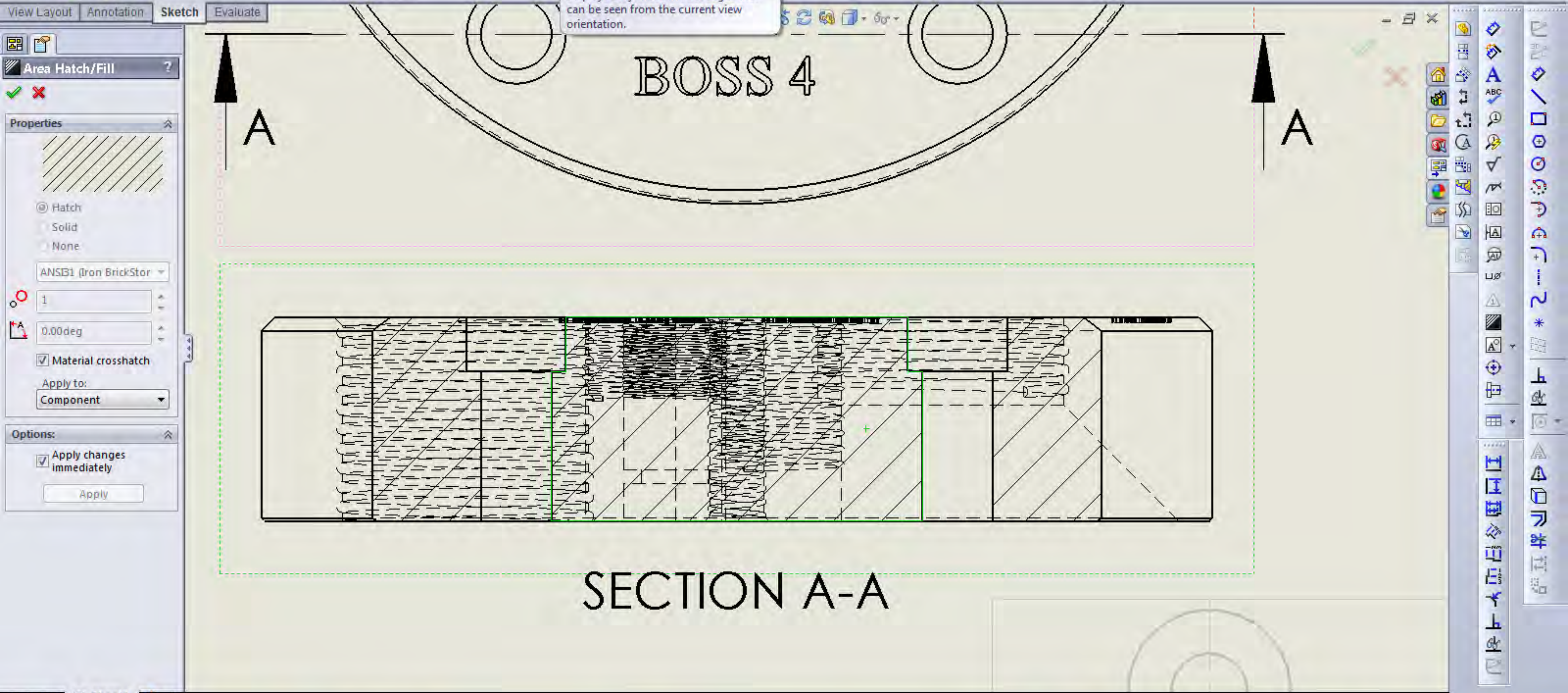


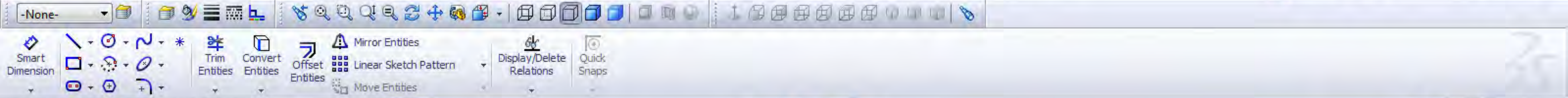
			DO NOT SCALE DRAWING	REVISION
McGill University				
NAME	SIGNATURE	DATE	TITLE:	





Top toolbar and ribbon area. The ribbon is set to 'Sketch' > 'Evaluate'. A tooltip for 'Hidden Lines Removed' is visible, stating: 'Displays only those model edges that can be seen from the current view orientation.'





Area Hatch/Fill

Properties

☒ Hatch
☐ Solid
☐ None

ANSI1 (Iron BrickStor)

1

0.00deg

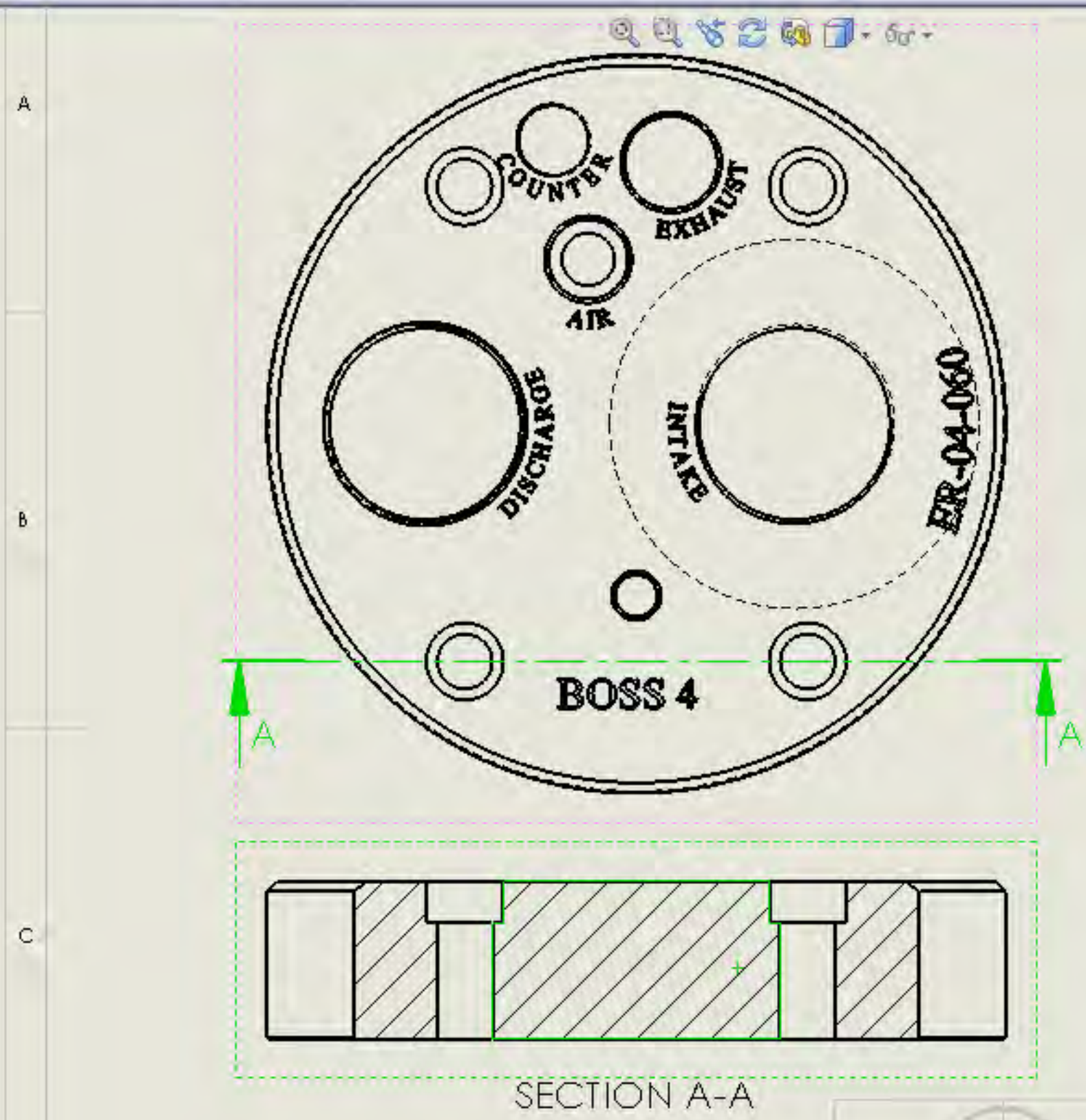
☒ Material crosshatch

Apply to:
Component

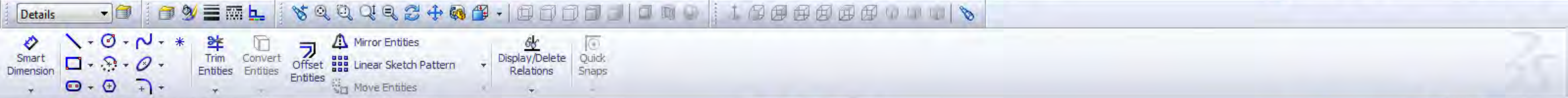
Options:

☒ Apply changes immediately

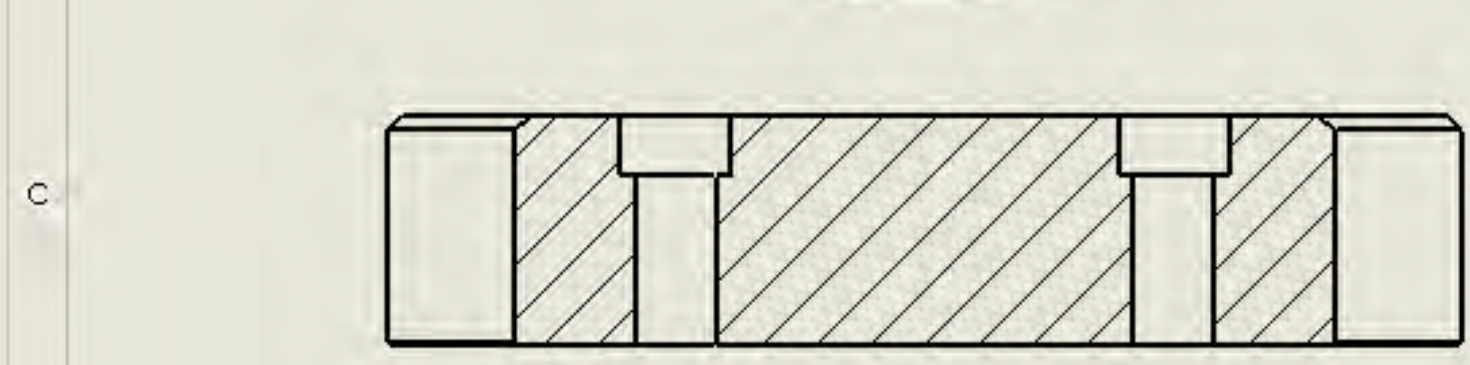
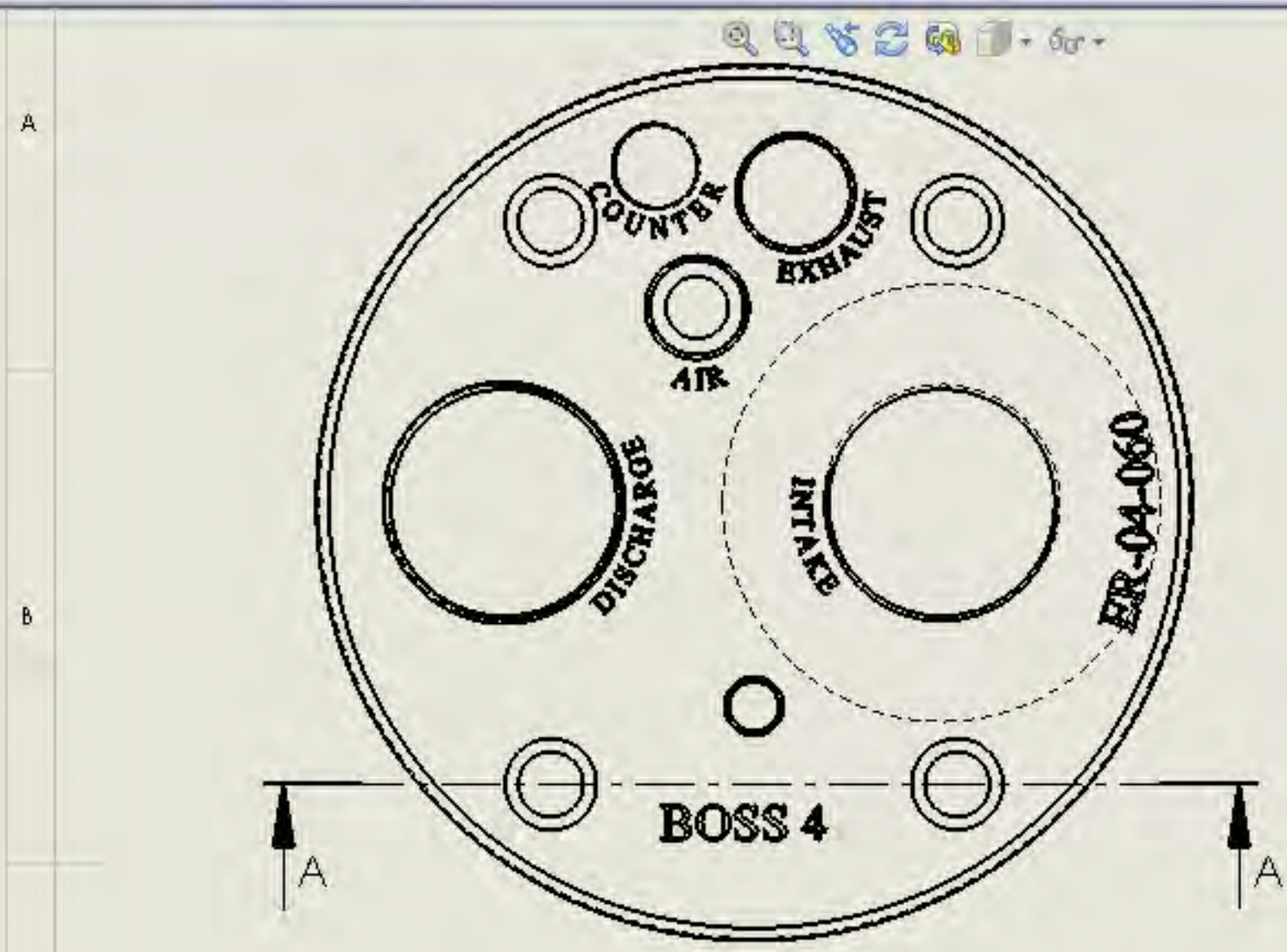
Apply



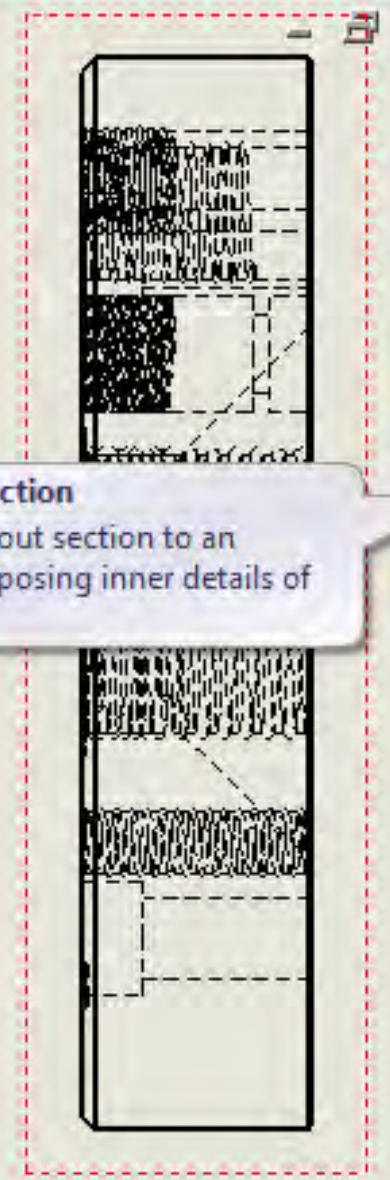
DO NOT SCALE DRAWING		McGill	
NAME	SIGNATURE	DATE	TITLE
DRAWN			



- 26 - Pumpcover Drawing
- Annotations
- Sheet1
- Sheet Format1
- Drawing View5
- 26 - Pumpcover<7>
- Drawing View6
- 26 - Pumpcover<8>
- Section View A-A



Broken-out Section
Adds a broken-out section to an existing view exposing inner details of a model.



DO NOT SCALE DRAWING	
McGill	
NAME	SIGNATURE
DATE	TITLE
DRAWN	

Details

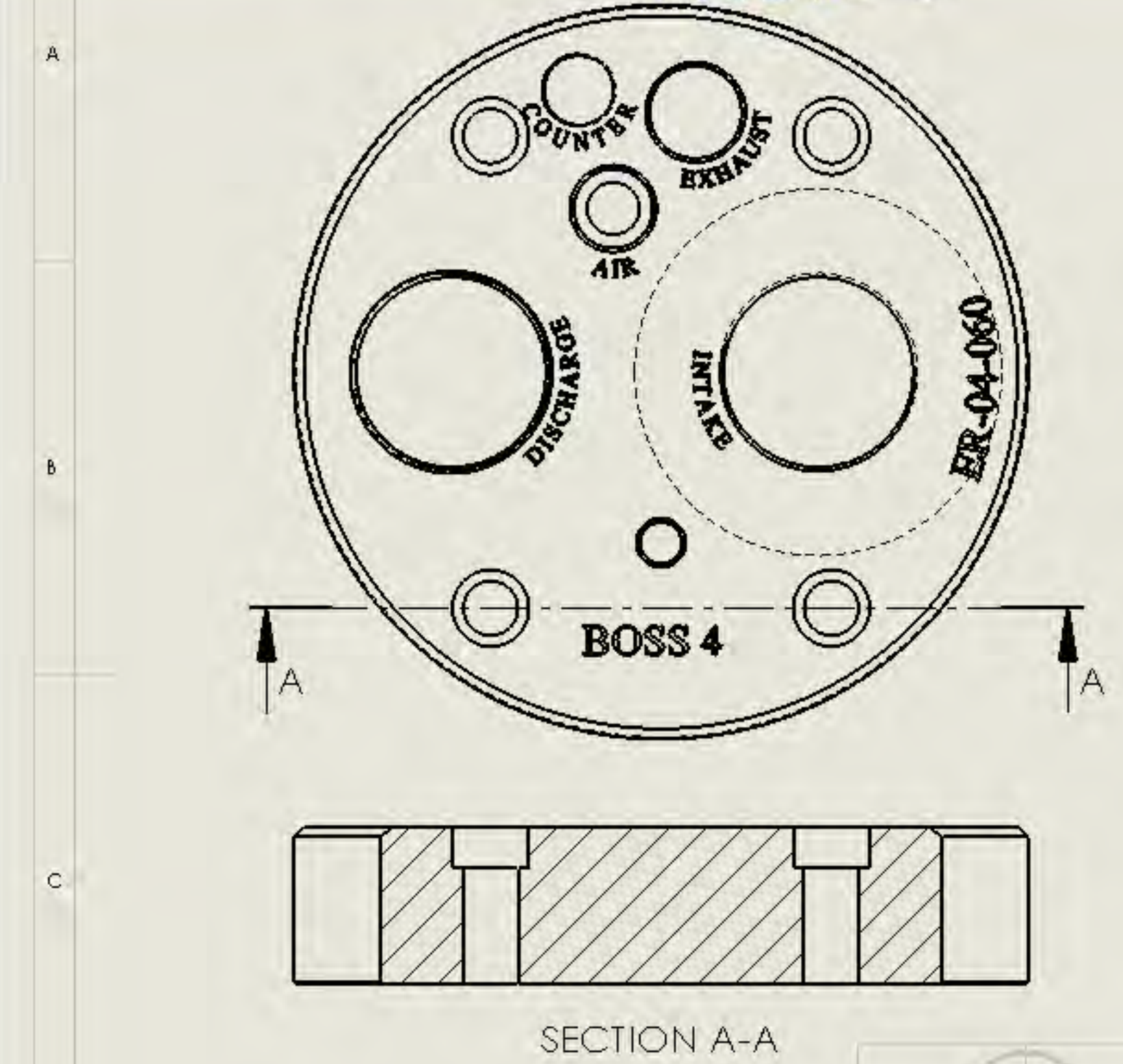
Smart Dimension, Trim Entities, Convert Entities, Offset Entities, Mirror Entities, Linear Sketch Pattern, Display/Delete Relations, Quick Snaps

View Layout Annotation Sketch Evaluate

Broken-out Section

Message

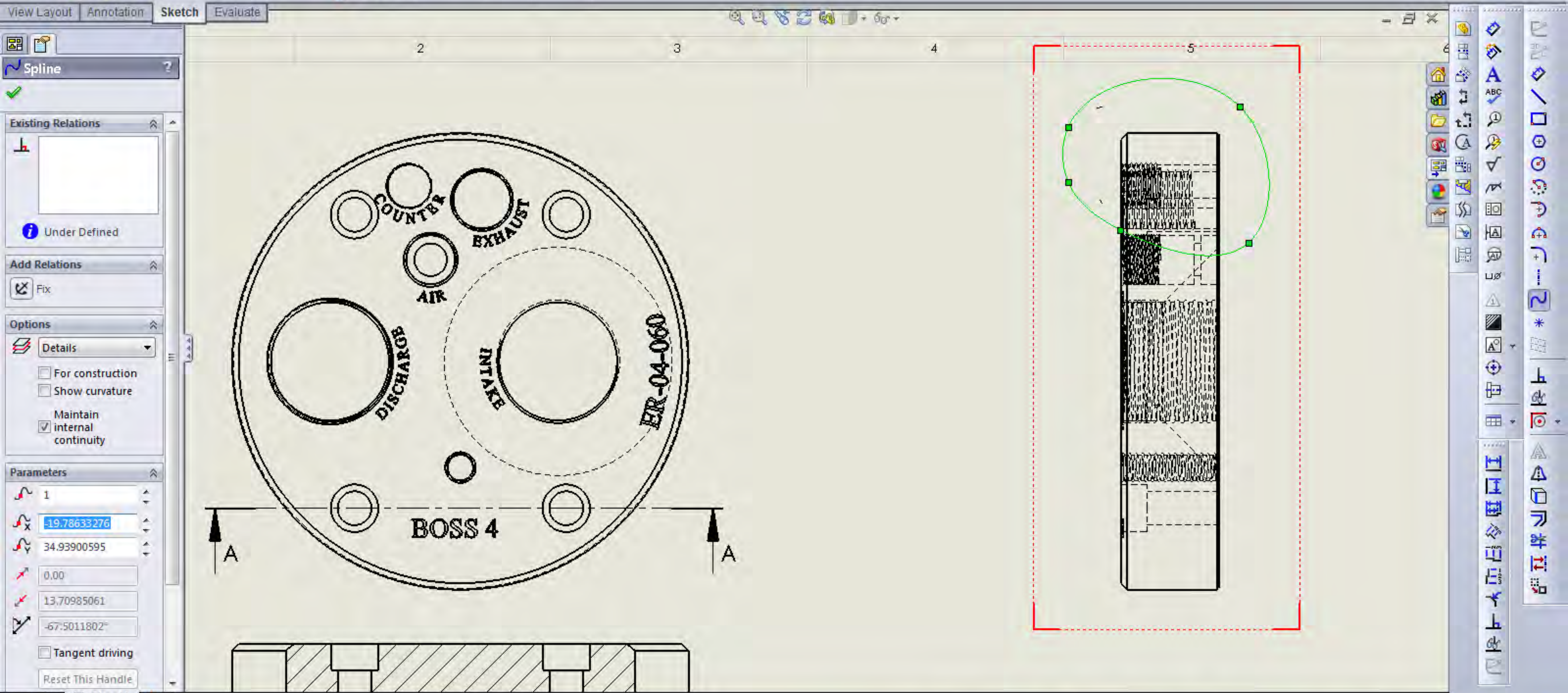
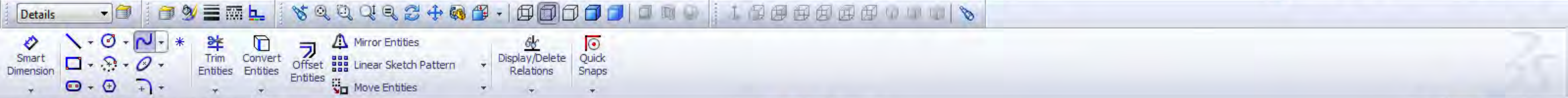
Please sketch a closed spline to continue section creation. If you do not want a spline profile, then please create and select a closed profile before choosing the Broken-out Section command.

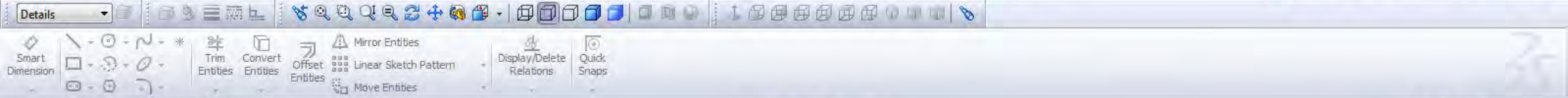


Spline

Sketches a spline. Click to add spline points that shape the curve.

ABC, L, A, B, C, D, E, F, G, H, I, J, K, L, M, N, O, P, Q, R, S, T, U, V, W, X, Y, Z, 1, 2, 3, 4, 5, 6, 7, 8, 9, 10, 11, 12, 13, 14, 15, 16, 17, 18, 19, 20, 21, 22, 23, 24, 25, 26, 27, 28, 29, 30, 31, 32, 33, 34, 35, 36, 37, 38, 39, 40, 41, 42, 43, 44, 45, 46, 47, 48, 49, 50, 51, 52, 53, 54, 55, 56, 57, 58, 59, 60, 61, 62, 63, 64, 65, 66, 67, 68, 69, 70, 71, 72, 73, 74, 75, 76, 77, 78, 79, 80, 81, 82, 83, 84, 85, 86, 87, 88, 89, 90, 91, 92, 93, 94, 95, 96, 97, 98, 99, 100





Broken-out Section ?

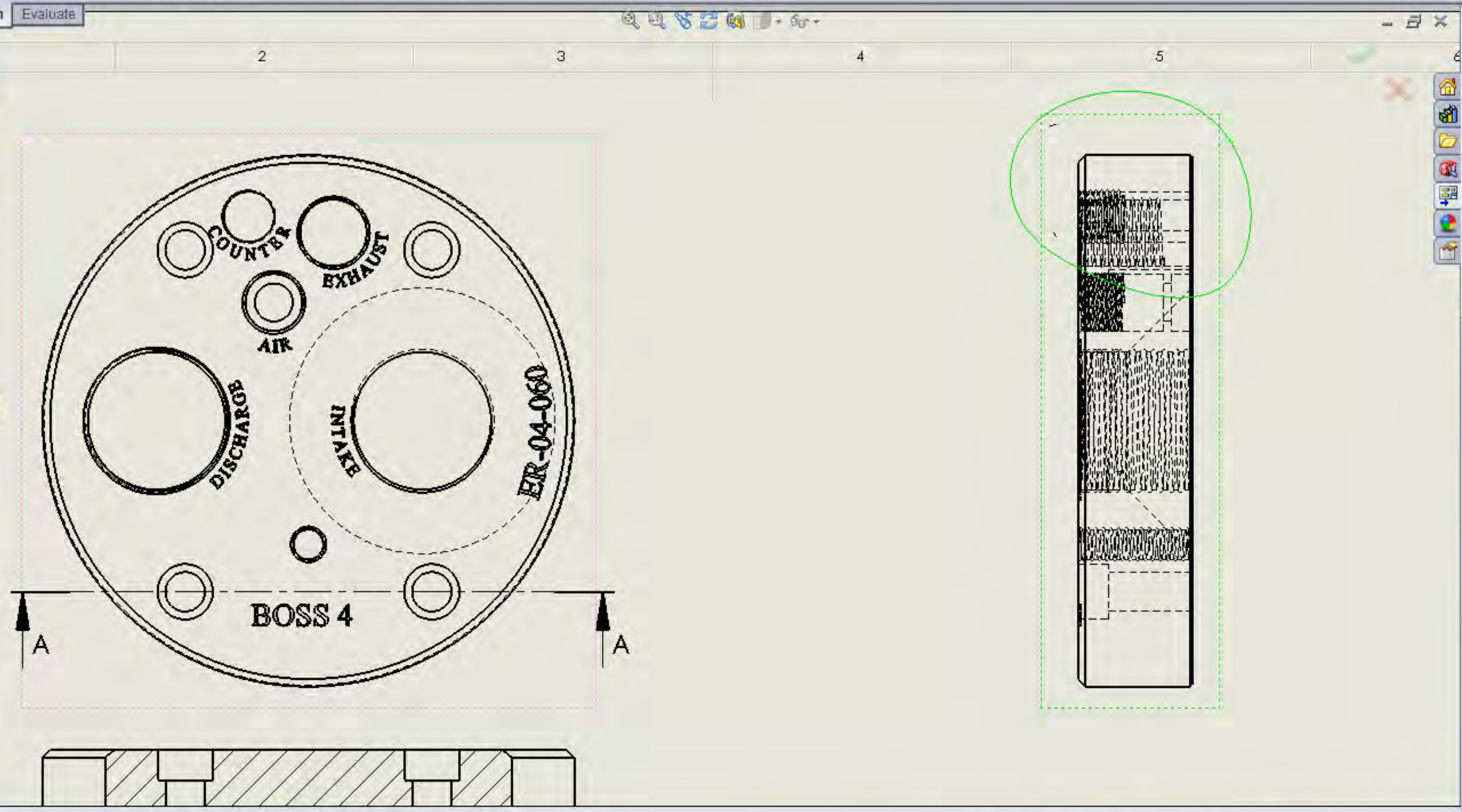
Message

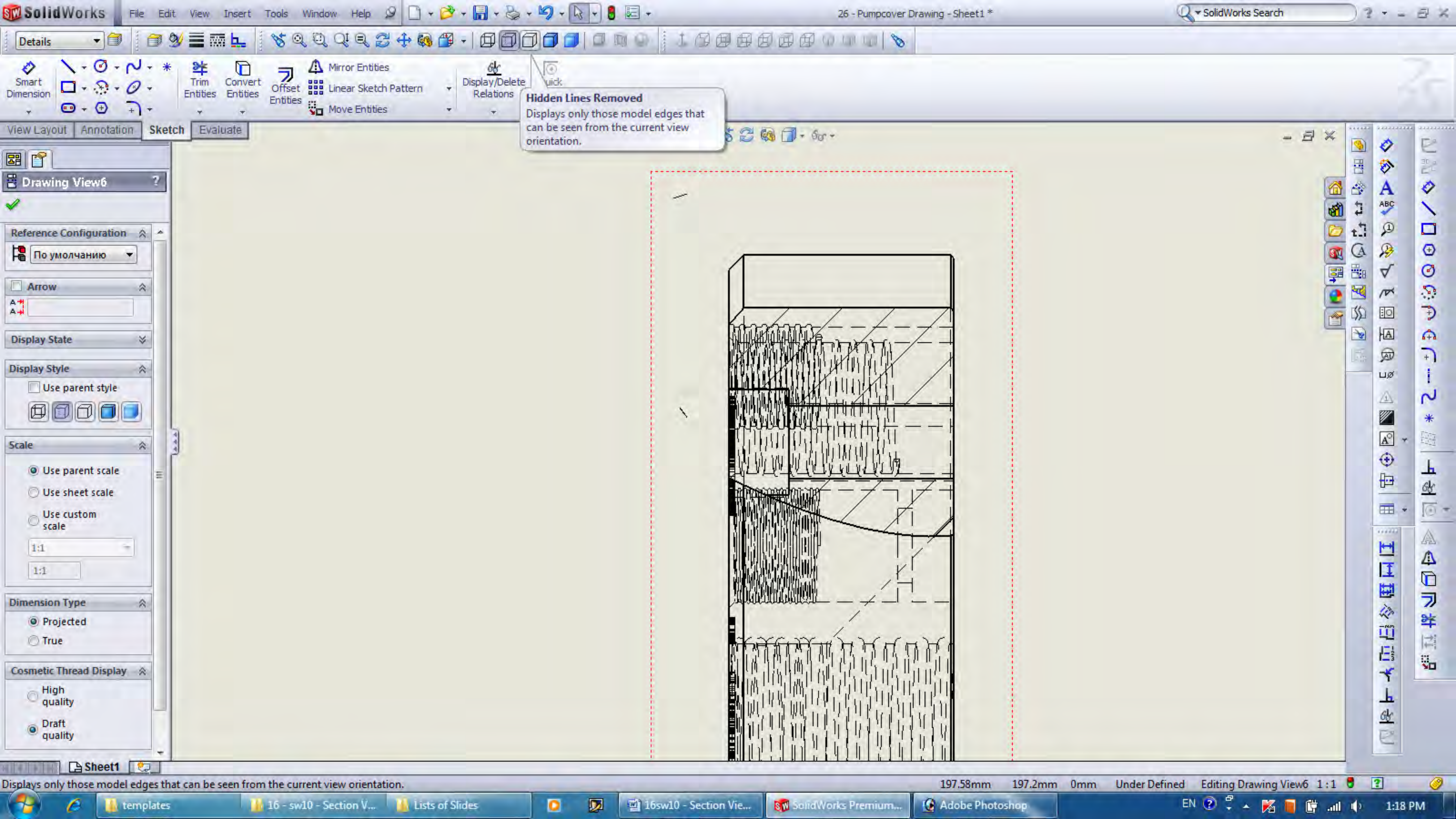
Specify depth for the broken-out section by entering a value or selecting an entity to cut up to it.

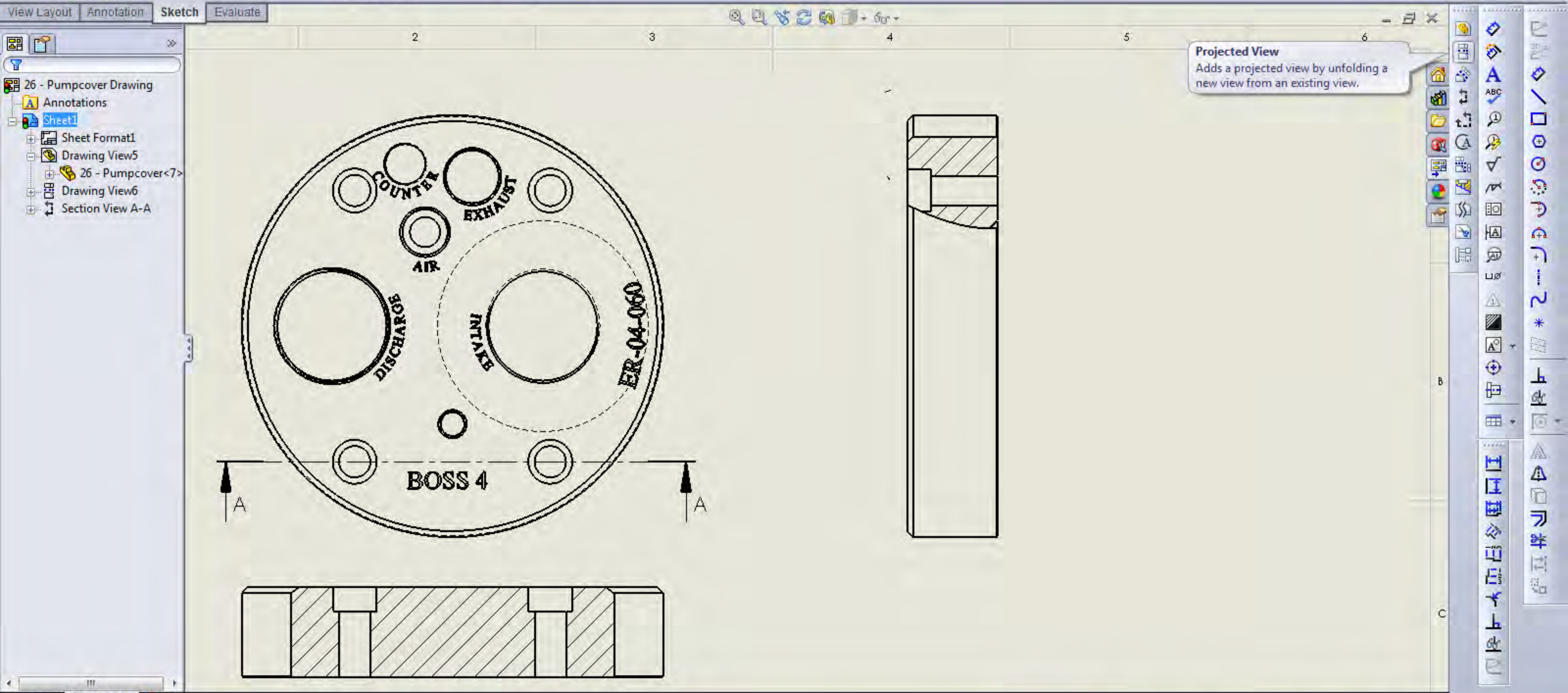
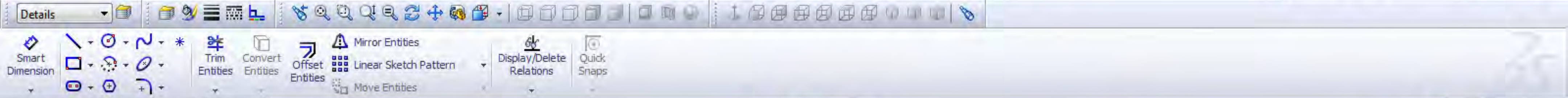
Depth

25.00mm

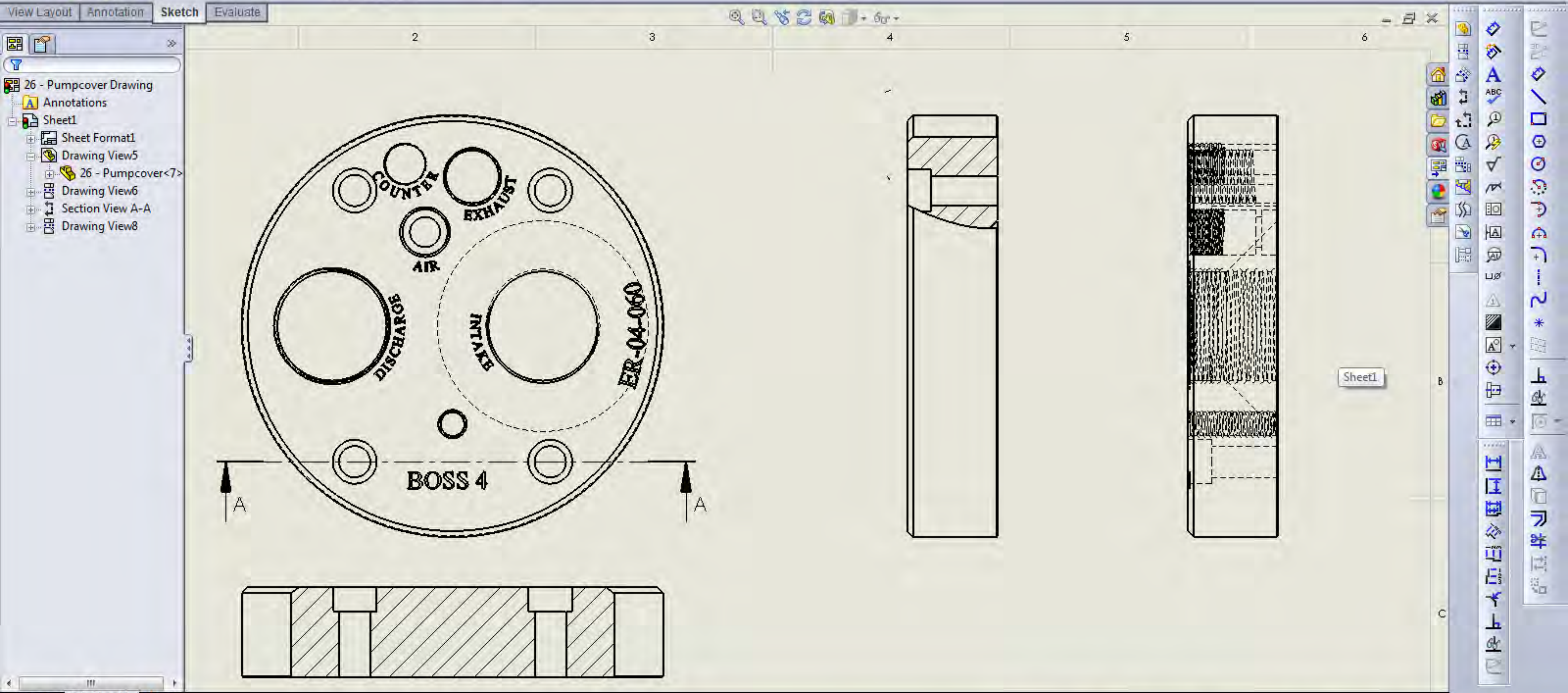
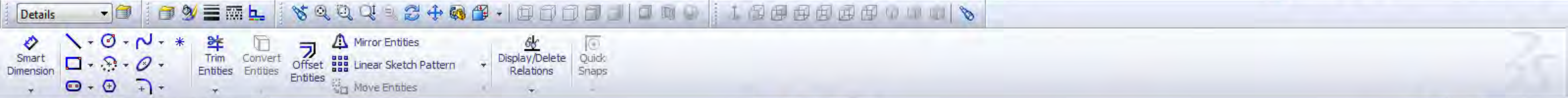
Preview







Projected View
Adds a projected view by unfolding a new view from an existing view.



Details

Smart Dimension, Trim Entities, Convert Entities, Offset Entities, Mirror Entities, Linear Sketch Pattern, Display/Delete Relations, Quick Snaps

View Layout Annotation Sketch Evaluate

Line Properties

Message: Edit the settings of the current line, sketch a new line, or select OK to change the settings for the next new line.

Existing Relations

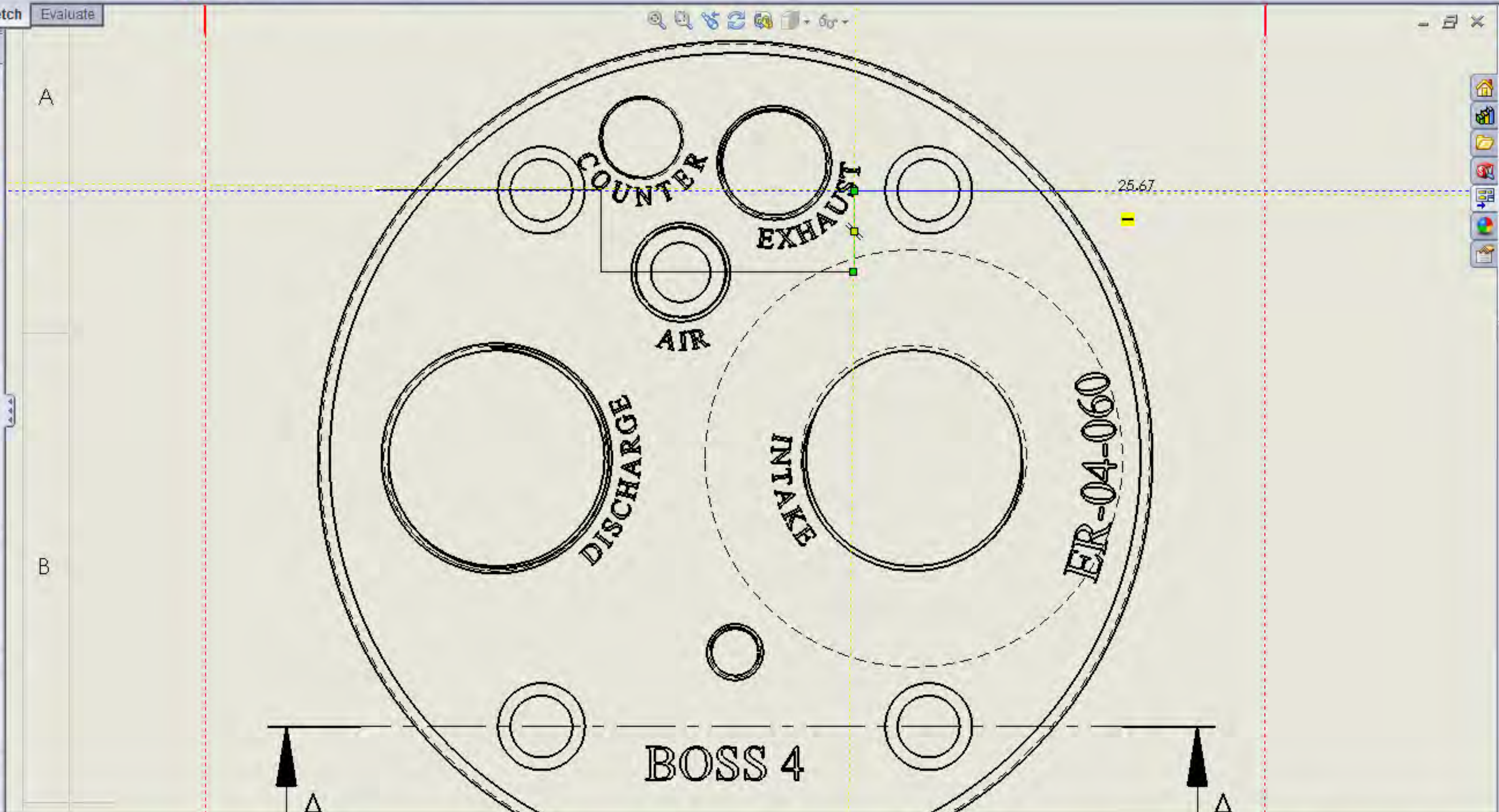
Under Defined

Add Relations: Horizontal, Vertical, Fix

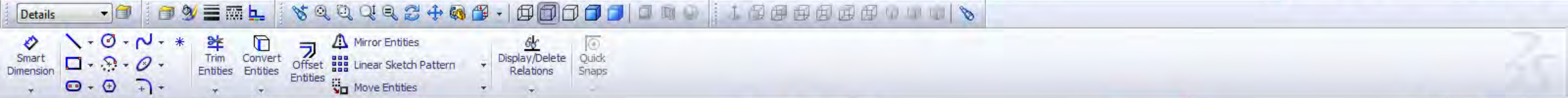
Options: -None-, For construction, Infinite length

Parameters: 25.6675142, 0.00°

Additional Parameters



Right sidebar containing various toolbars and icons for SolidWorks.



Properties

Selected Entities

- Line2
- Line3
- Line4

Existing Relations

Under Defined

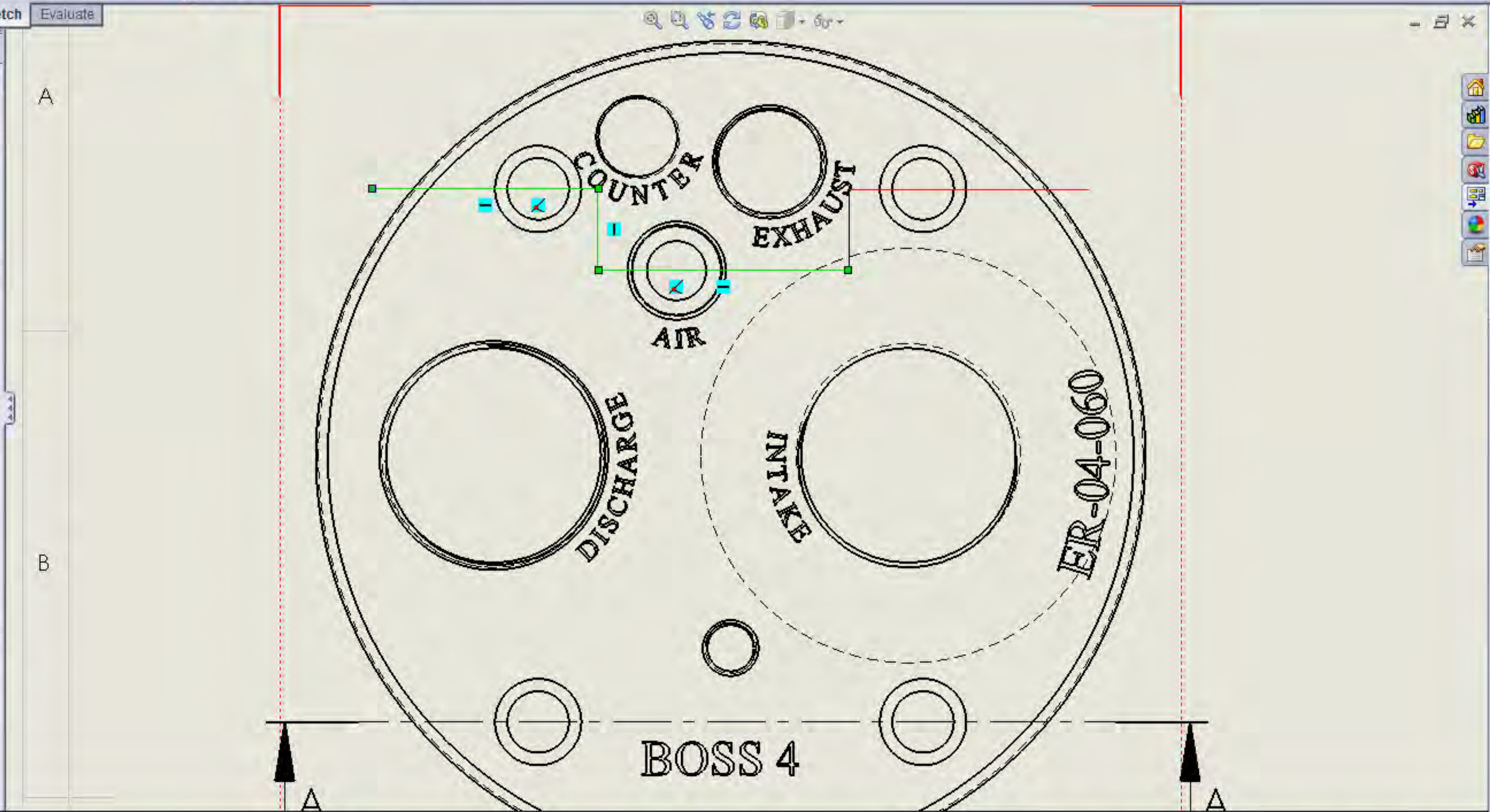
Add Relations

- Horizontal
- Vertical
- Collinear
- Parallel
- Equal
- Fix

Options

Details

For construction

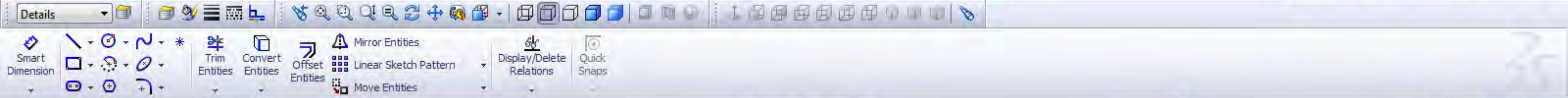


Navigation icons

Standard toolbar

Feature tree

Property manager



Properties

Selected Entities

- Line2
- Line3
- Line4
- Line5
- Line6

Existing Relations

Under Defined

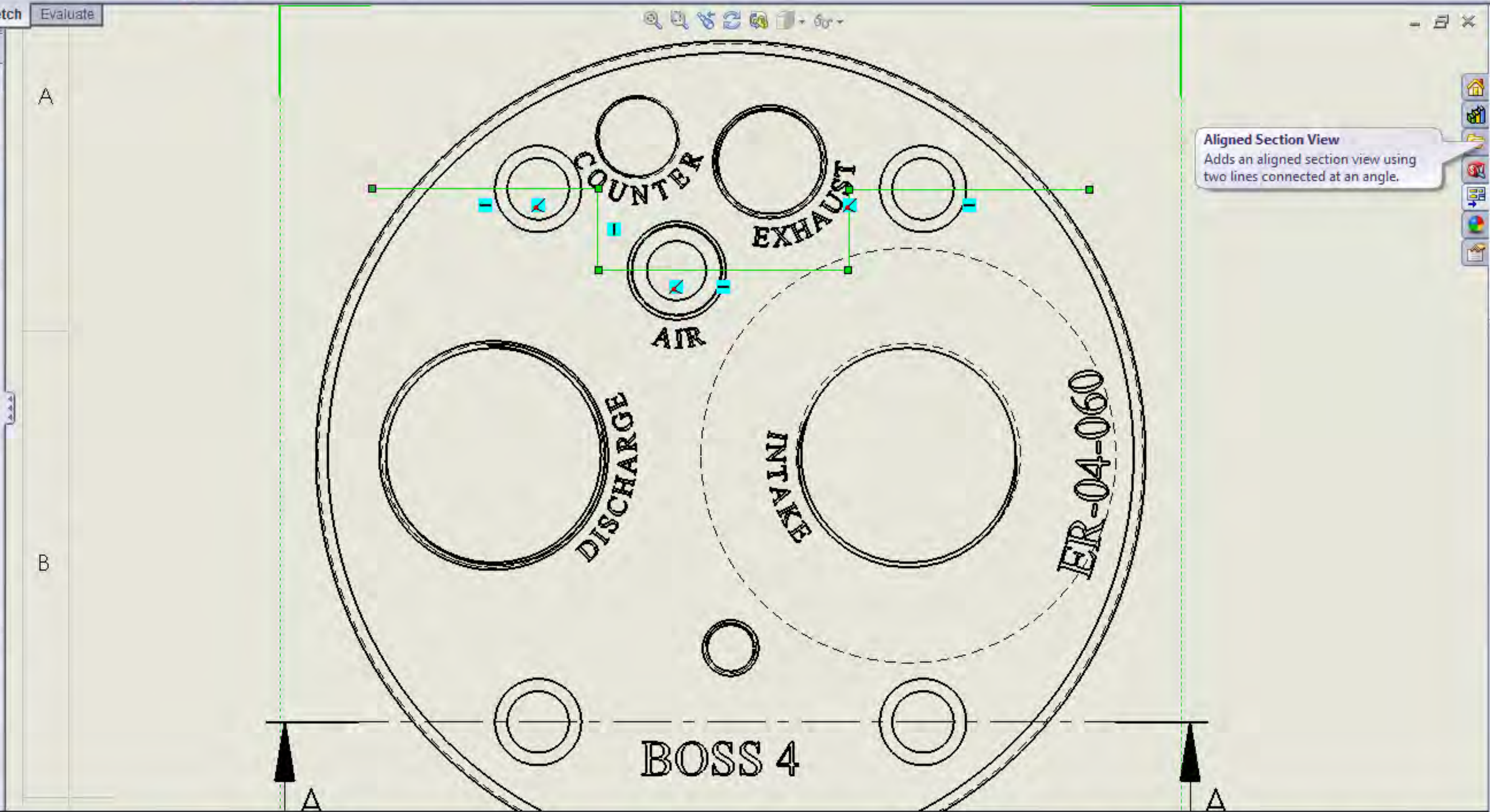
Add Relations

- Horizontal
- Vertical
- Collinear
- Parallel
- Equal
- Fix

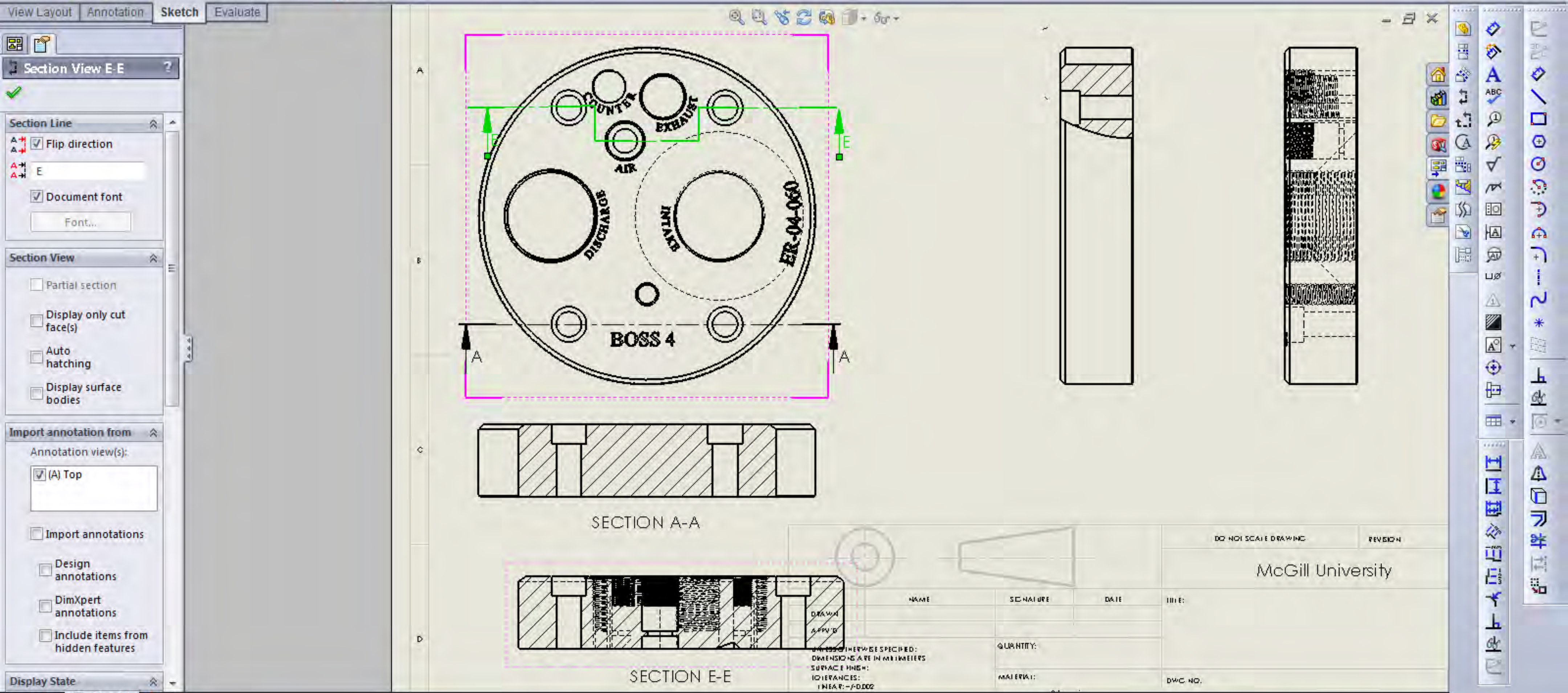
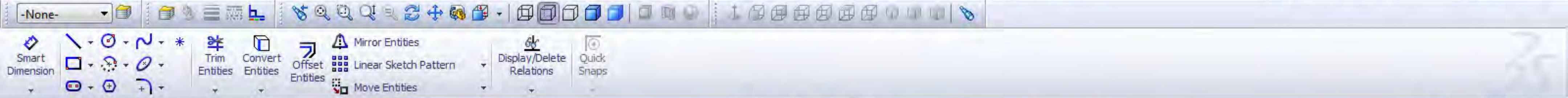
Options

Details

☐ For construction



Vertical toolbar with various drawing tools including lines, circles, and section view tools.



Standard 3 View Model Projected Auxiliary Section View Detail Broken-out Section Break Crop View Alternate Position View

View Layout Annotation Sketch Evaluate

Section View E-E

Section Line

☒ Flip direction

☒ Document font

Font...

Section View

☐ Partial section

☐ Display only cut face(s)

☐ Auto hatching

☐ Display surface bodies

Import annotation from

Annotation view(s):

☒ (A) Top

☐ Import annotations

☐ Design annotations

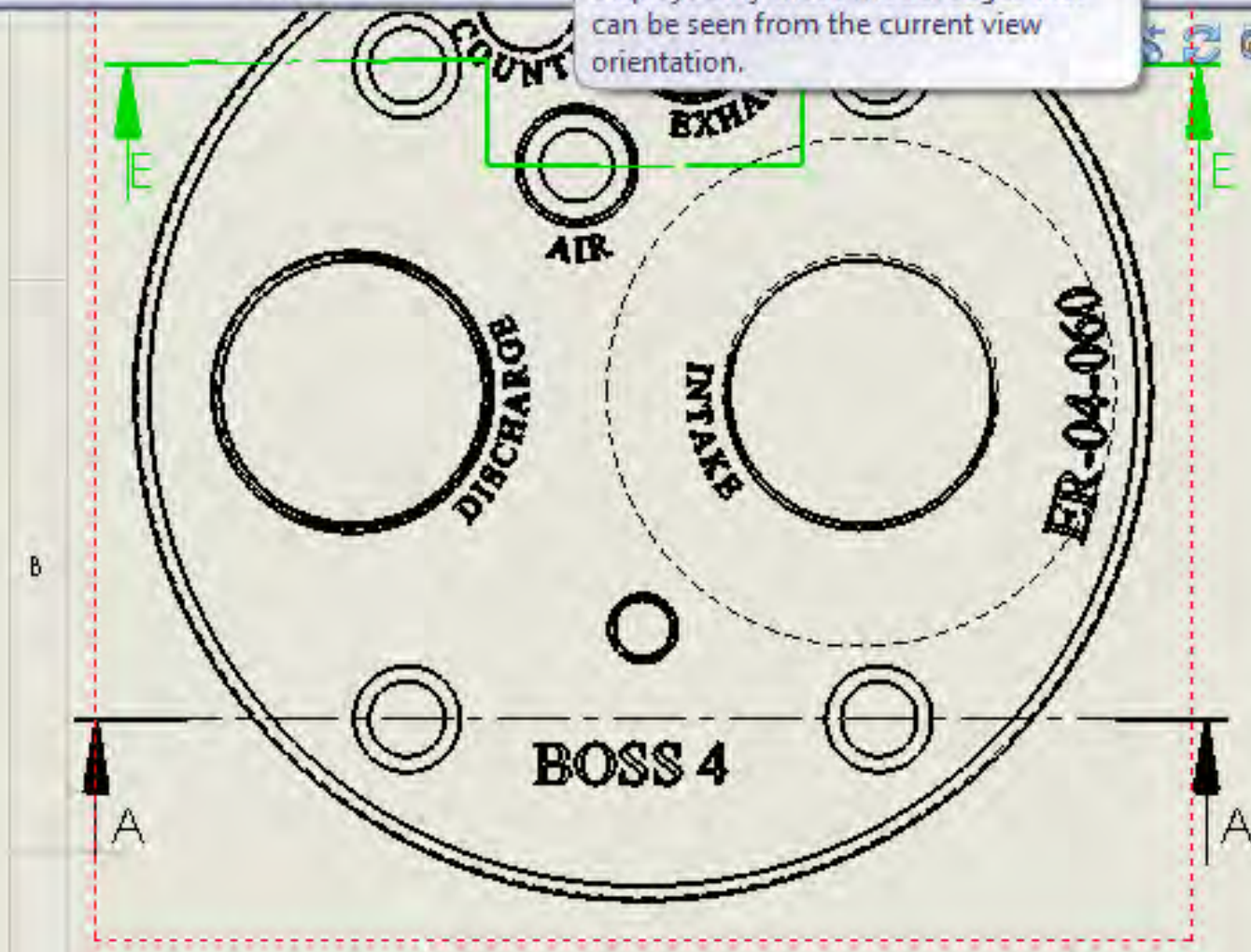
☐ DimXpert annotations

☐ Include items from hidden features

Display State

Sheet1

Hidden Lines Removed
Displays only those model edges that can be seen from the current view orientation.



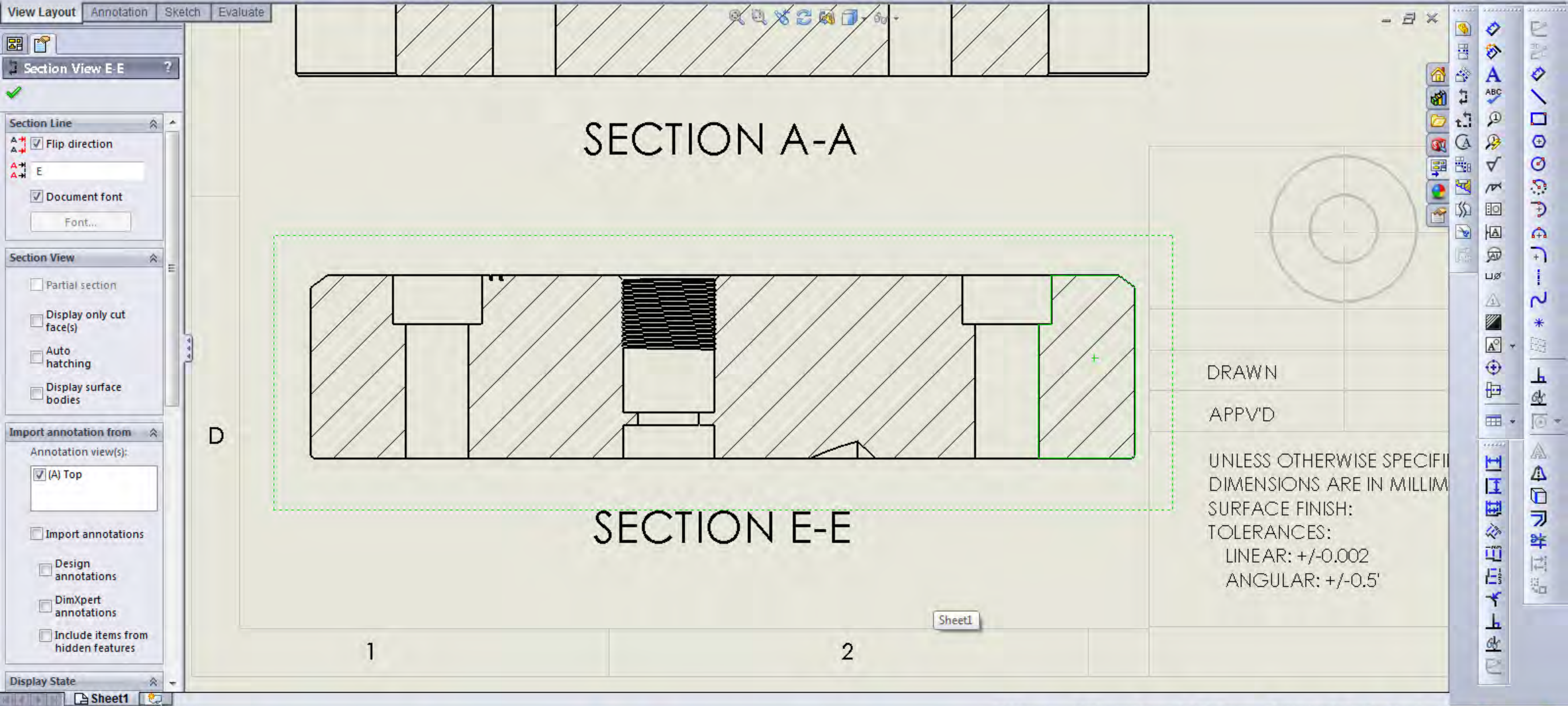
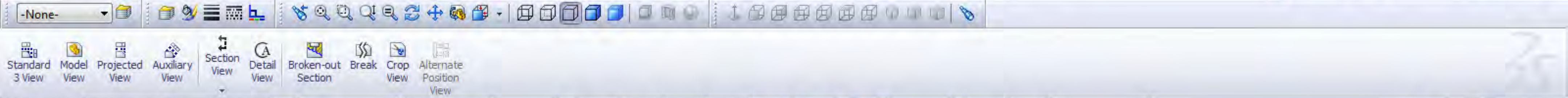
SECTION A-A

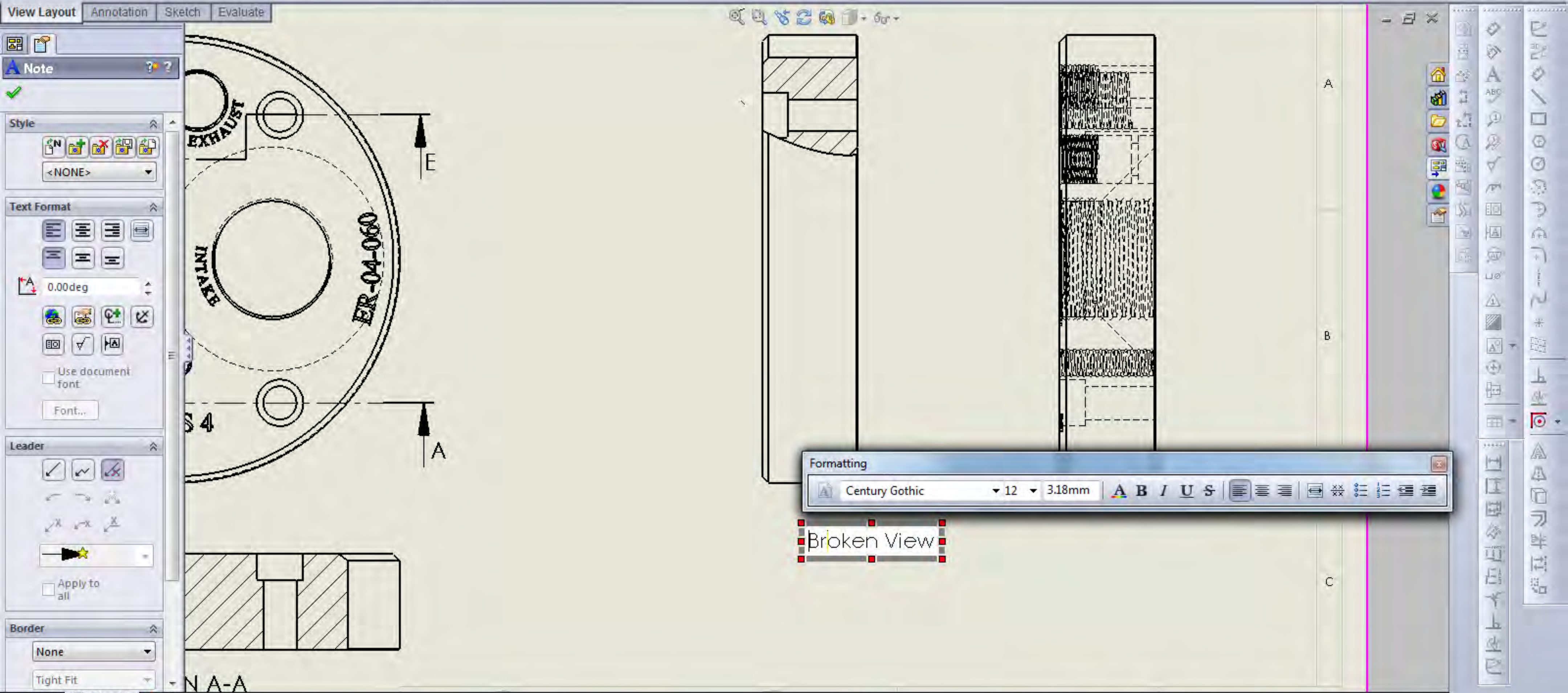
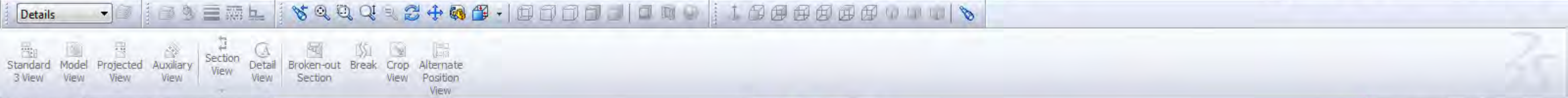


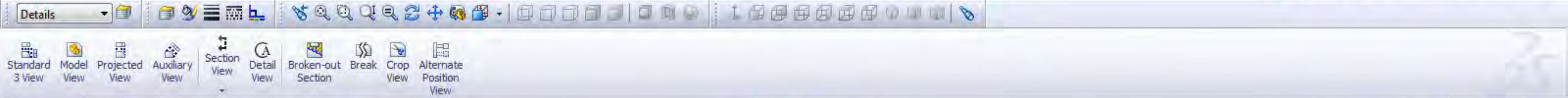
NAME		SIGNATURE	DATE	TITLE
DRAWN				
APP'D				
UNLESS OTHERWISE SPECIFIED: DIMENSIONS ARE IN MILLIMETERS		QUANTITY:		

DO NOT SCALE DRAWING

McGill University







View Layout Annotation Sketch Evaluate

- 26 - Pumpcover Drawing
 - Annotations
 - Sheet1
 - Sheet Format1
 - Drawing View5
 - 26 - Pumpcover<7>
 - Drawing View6
 - Section View A-A
 - Drawing View8
 - 26 - Pumpcover<11>
 - Section View E-E

