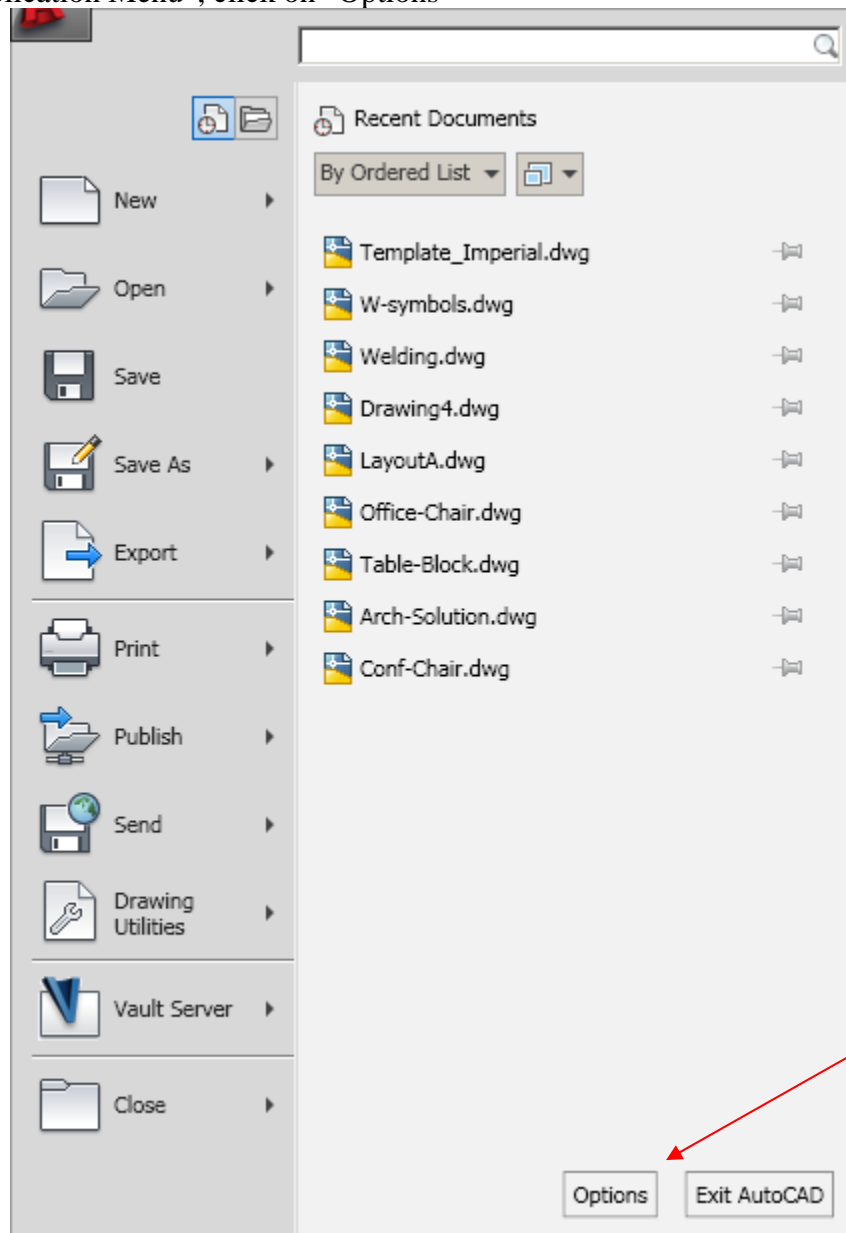
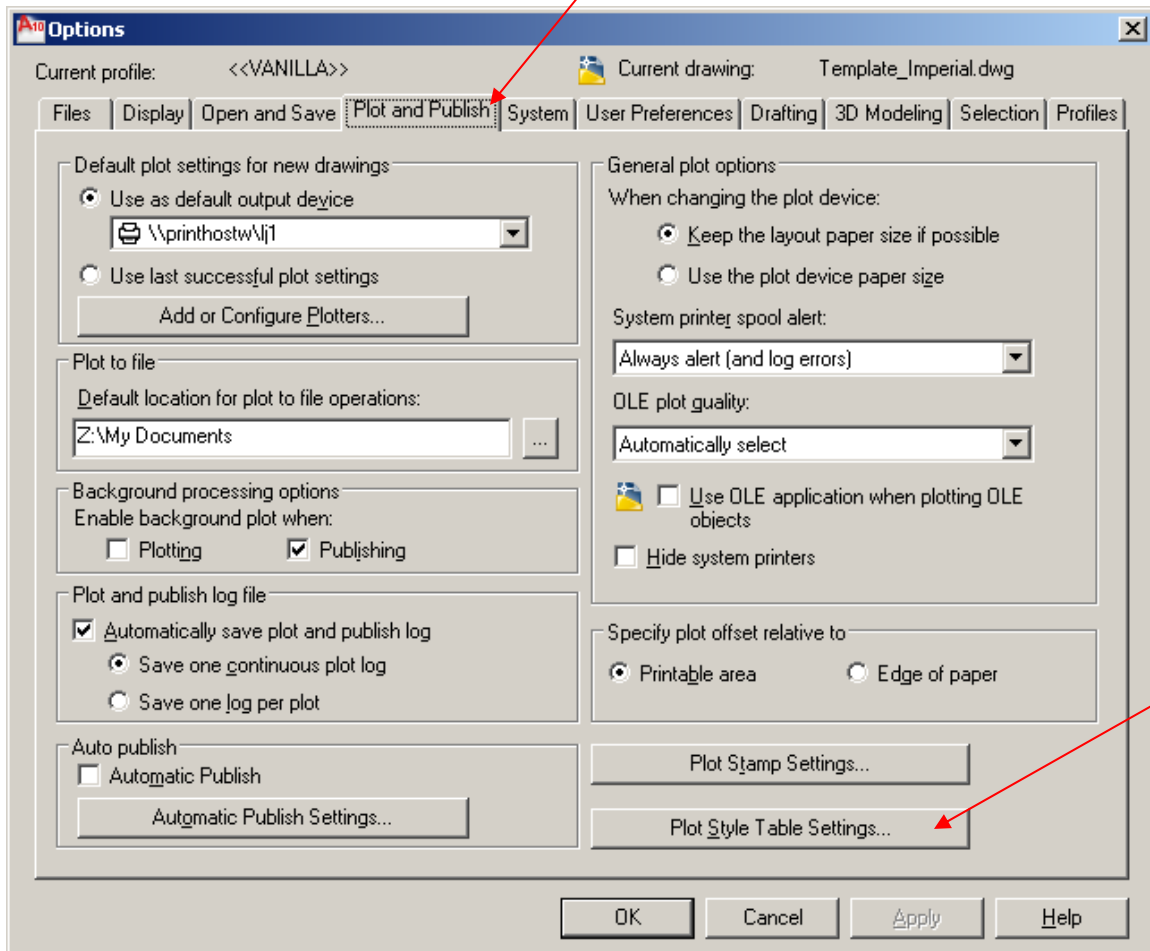


Template File and Plot Style

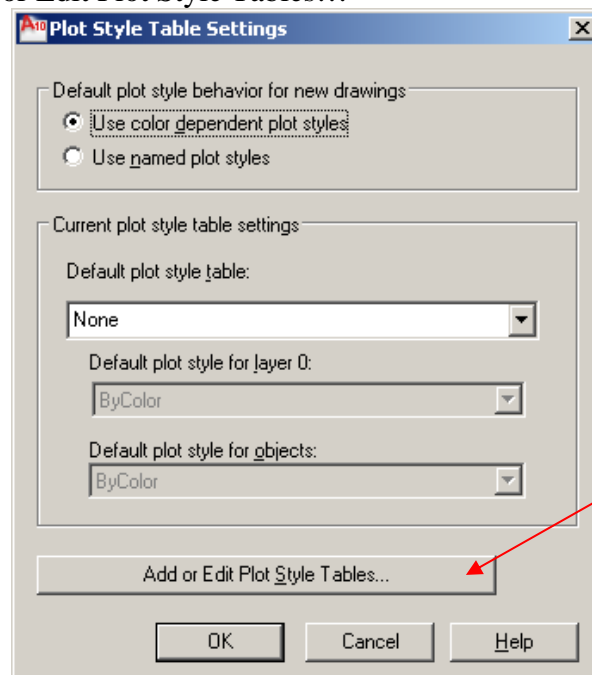
From “Application Menu”, click on “Options”



In the “Options” dialog box, click on “Plot and Publish” tab, then “Plot Style Table Settings...”

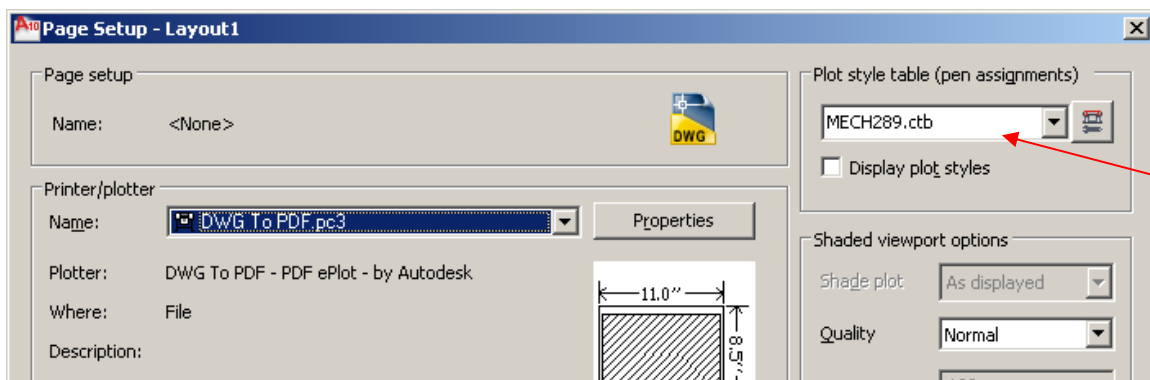
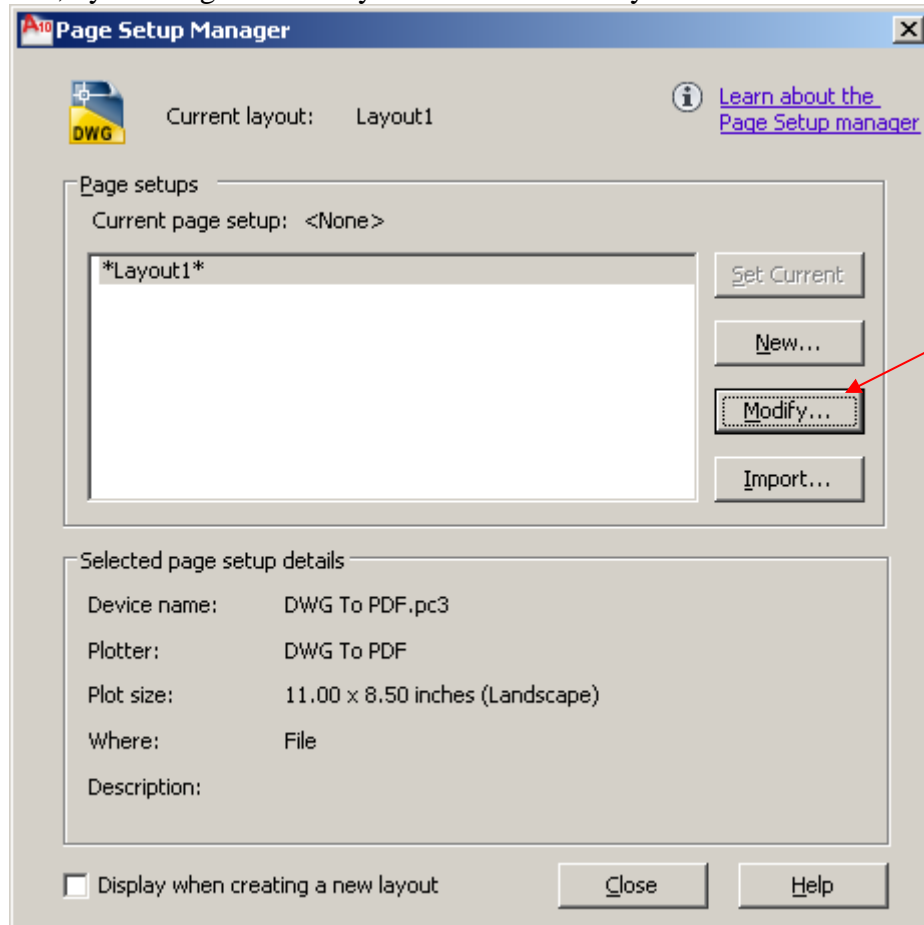


Then, click on “Add or Edit Plot Style Tables...”

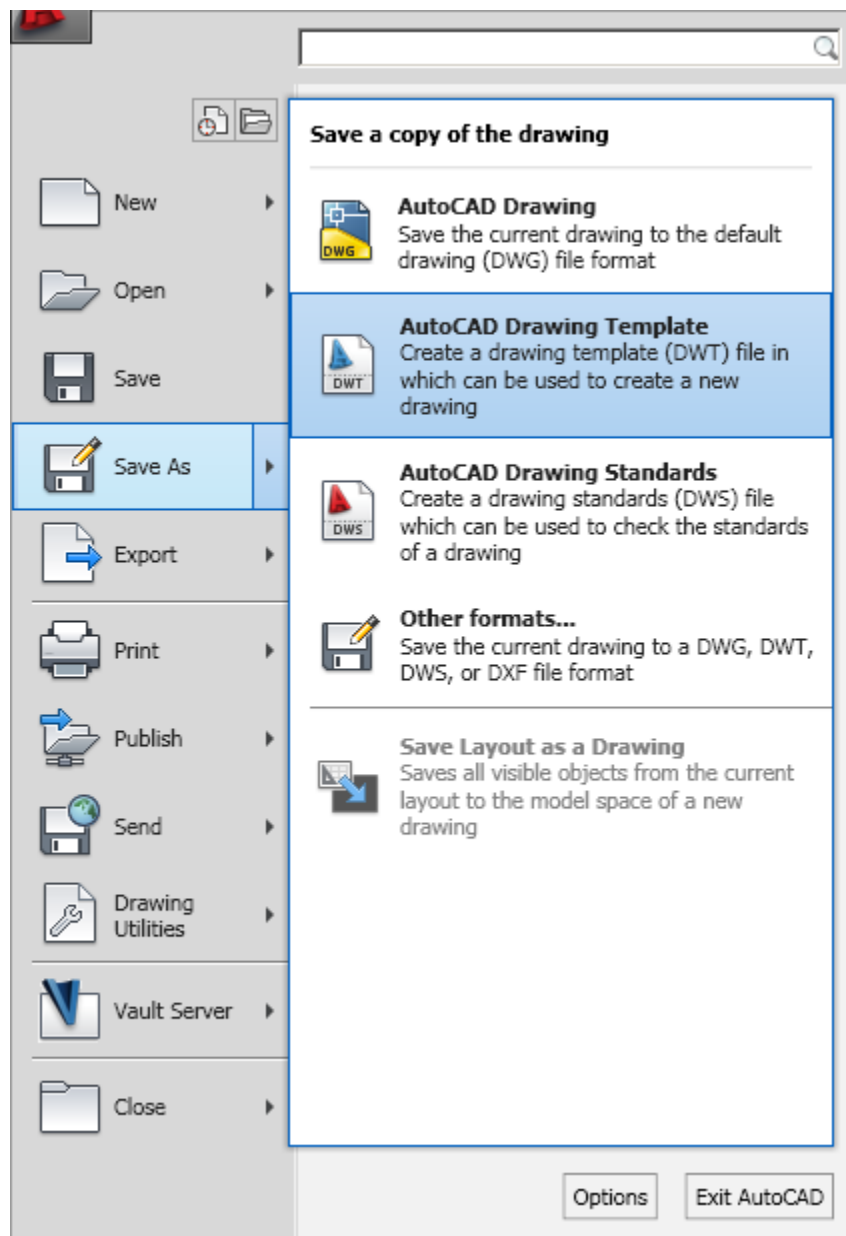


This opens the folder in which, the plot style files are stored. Add (copy and paste) to this folder the plot style “MECH289.ctb” that you have downloaded from the course website. You need to close and reopen AutoCAD to changes take effect.

Now, you can open the template file “Template_Imperial.dwg” (downloaded from the website) and you can save it as a *.dwt. Before doing that, check the layout “Page Setup Manager...”, by clicking on “Modify...” and ensure that you have “MECH289.ctb”.



If so, you can “Save As...” “AutoCAD Drawing Template”, by giving a name to your template.



Next time that you open a new drawing, you can choose this template and have some settings done.