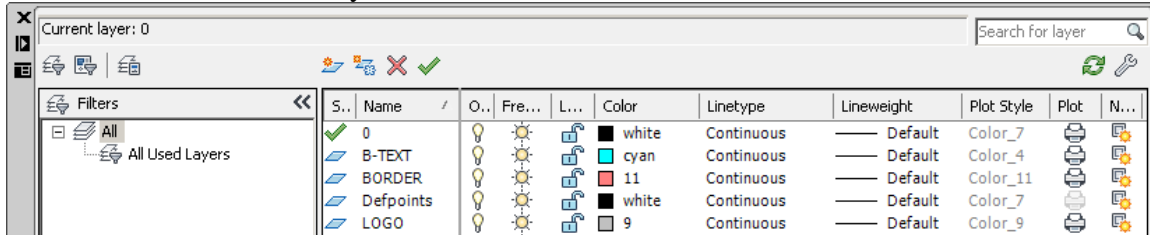
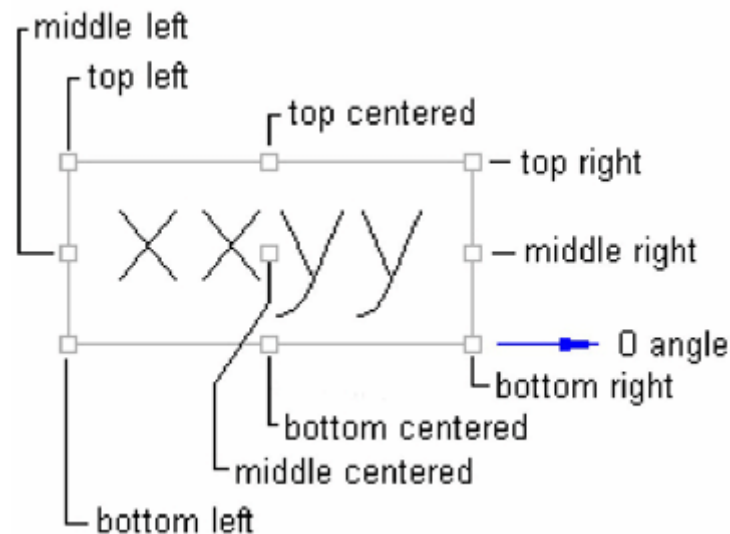


Create layouts for size A and B as indicated on page 2.

1. Create the below layers.



2. Draw borders, as they are shown on page 1, as well as the title block lines of Fig. VIII (form 5) of page 3. Do not forget to put them on “BORDER” layer.
3. Create texts on “B-TEXT” layer as they are indicated in Fig. VIII (form 5).
4. Creates an attribute for each of the items below:
  - a. in front of DR BY:
  - b. in front of SCALE:
  - c. in front of NO.
  - d. instead of DRAWING TITLE
  - e. instead of DATE
5. Instead of SECT, create an attribute for your McGill ID with ID as the tag.
6. Chose an appropriate text justification for each attribute.



From [www.cadalyst.com](http://www.cadalyst.com)

7. Create an external dwg for each of the layouts (size A and B)
8. From now on, submit assignments by inserting a layout and completing the information.

# Sheet Layouts

A convenient code to identify American National Standard sheet sizes and forms suggested by the authors for title, parts or material list, and revision blocks, for use of instructors in making assignments, is shown here. All dimensions are in inches.

Three sizes of sheets are illustrated: **Size A**, Fig. I, **Size B**, Fig. V, and **Size C**, Fig. VI. Metric size sheets are not shown.

Eight forms of lettering arrangements are suggested, known as **Forms 1, 2, 3, 4, 5, 6, 7, and 8**, as shown below and opposite. The total length of **Forms 1, 2, 3, and 4** may be adjusted to fit **Sizes A4, A3, and A2**.

The term **layout** designates a sheet of certain size plus a certain arrangement of lettering. Thus **Layout A-1** is a combination of **Size A**, Fig. I, and **Form 1**, Fig. II. **Layout C-678** is a combination of **Size C**, Fig. VI, and **Forms 6, 7, and 8**, Figs. IX, X, and XI. **Layout A4-2** (adjusted) is a combination of **Size A4** and **Form 2**, Fig. III, adjusted to fit between the borders. Other combinations may be employed as assigned by the instructor.

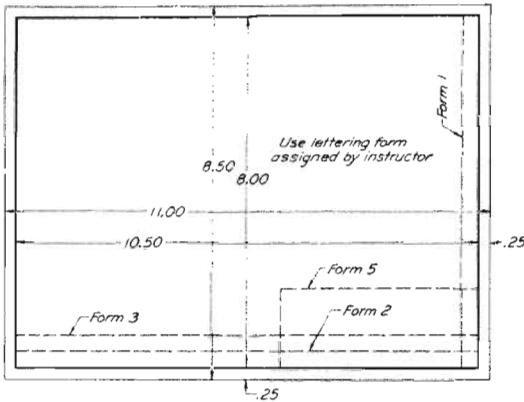


Fig. I Size A Sheet (8.50" × 11.00")

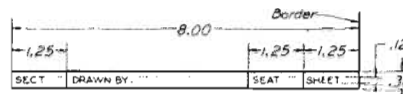


Fig. II Form 1. Title Block

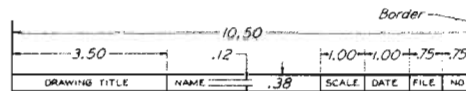


Fig. III Form 2. Title Block

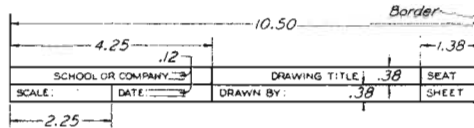


Fig. IV Form 3. Title Block

## Sheet Sizes

### American National Standard

- A - 8.50" × 11.00"
- B - 11.00" × 17.00"
- C - 17.00" × 22.00"
- D - 22.00" × 34.00"
- E - 34.00" × 44.00"

### International Standard

- A4 - 210 mm × 297 mm
  - A3 - 297 mm × 420 mm
  - A2 - 420 mm × 594 mm
  - A1 - 594 mm × 841 mm
  - A0 - 841 mm × 1189 mm
- (25.4 mm = 1.00")

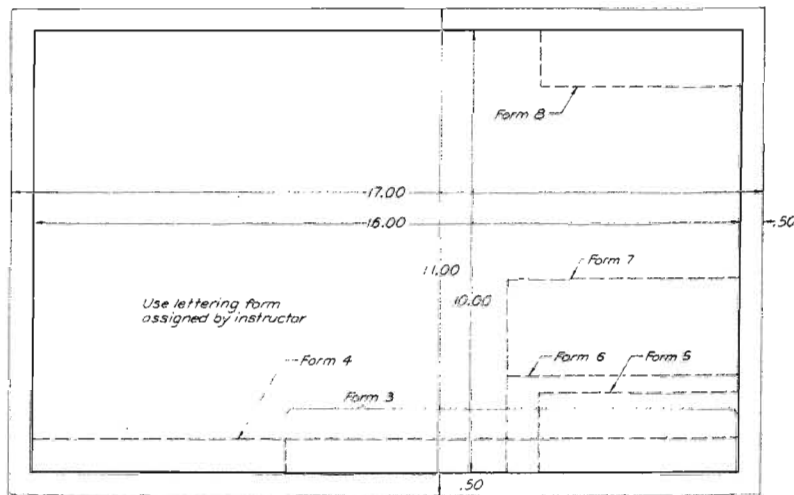


Fig. V Size B Sheet (11.00" × 17.00")

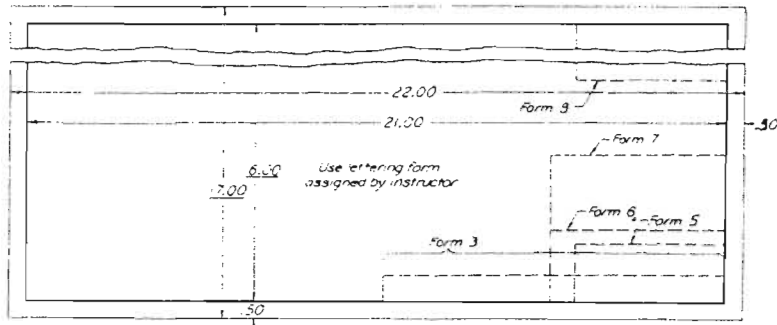


Fig. VI Size C Sheet (17.00' x 22.00')

Ref:  
Giesecke, 2001,  
Modern Graphics  
Communication

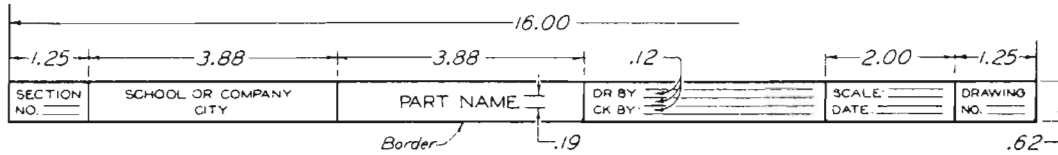


Fig. VII Form 4. Title Block

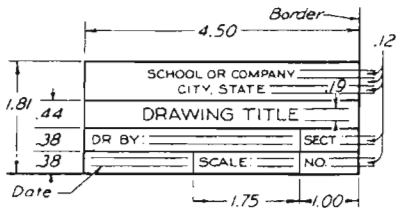


Fig. VIII Form 5. Title Block

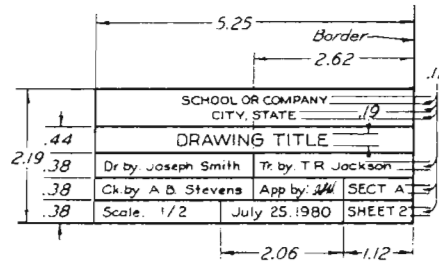


Fig. IX Form 6. Title Block

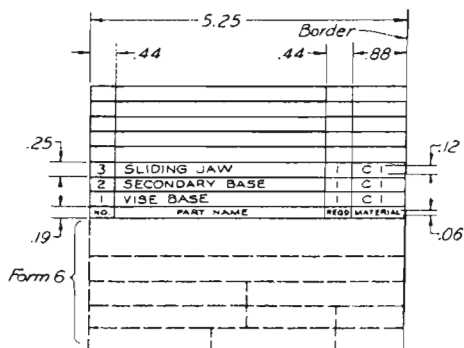


Fig. X Form 7. Parts List or Material List

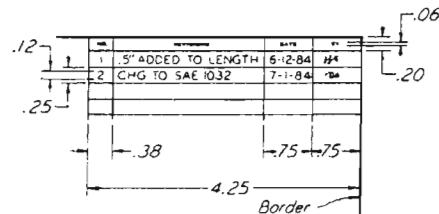


Fig. XI Form 8. Revision Block