

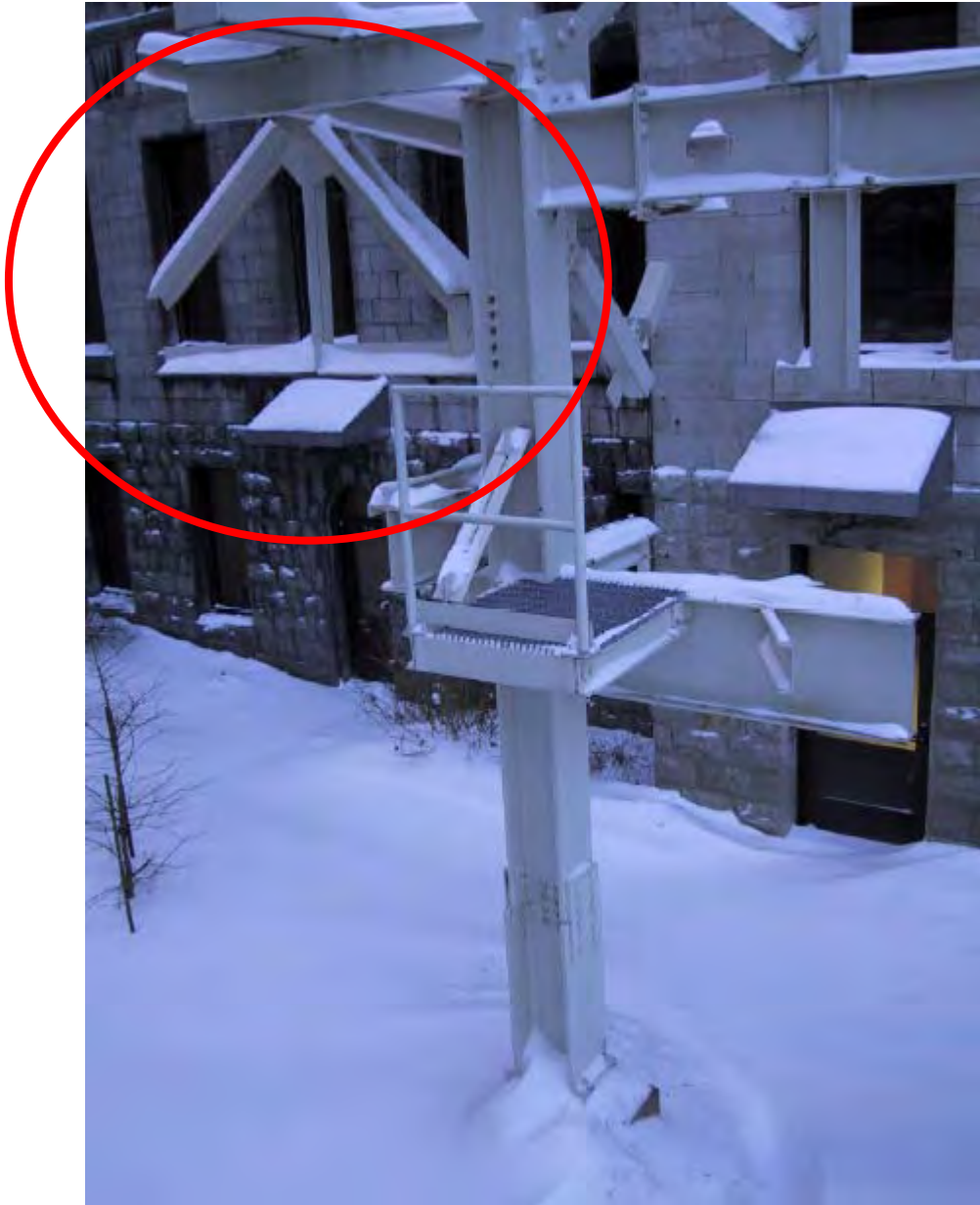
CAD4 assignment – Structure 3D & 2D modeling

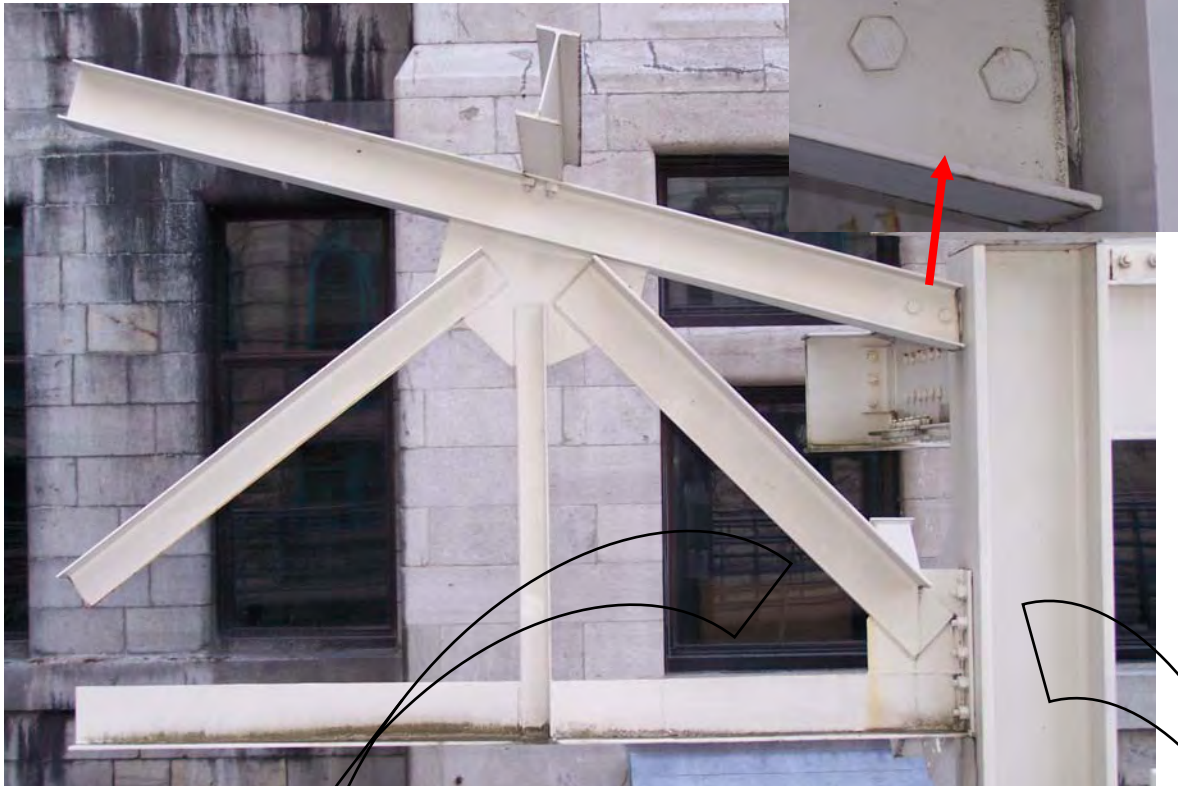
- In this assignment, you should generate, in imperial units, the 3D model of the cut-off truss shown below. Some photos are presented here to give you an idea. You should also contemplate the structure to find out all details.
- The beams that you use in your model should be standard.
- You do not need to model bolts in 3D neither welding. However in 2D you will add symbols to show these items.
- You should submit a 2D drawing with Front View and Top View in an appropriate layout format (size A or B) and scale (refer to structural drawings scales, below). Furthermore, you should provide an Isometric View either in the same layout or in another one.
- For this assignment, there is no need to dimension your drawing.

SCALES		PRINCIPAL DRAWINGS USED
INCH AND FOOT	MILLIMETER AND METER	
Full	1:1	Layout
3 = 1'-0	1:5	Layout
1½ = 1'-0	1:10	Layout or detail
¾ = 1'-0	1:20	Detail
⅝ = 1'-0		Erection or design
⅜ = 1'-0		Erection or design
¼ = 1'-0		Erection or design
1 = 1'-0		Detail
⅙ = 1'-0		Detail or erection
⅓ = 1'-0	1:50	Erection or design
⅕ = 1'-0	1:100	Erection or design

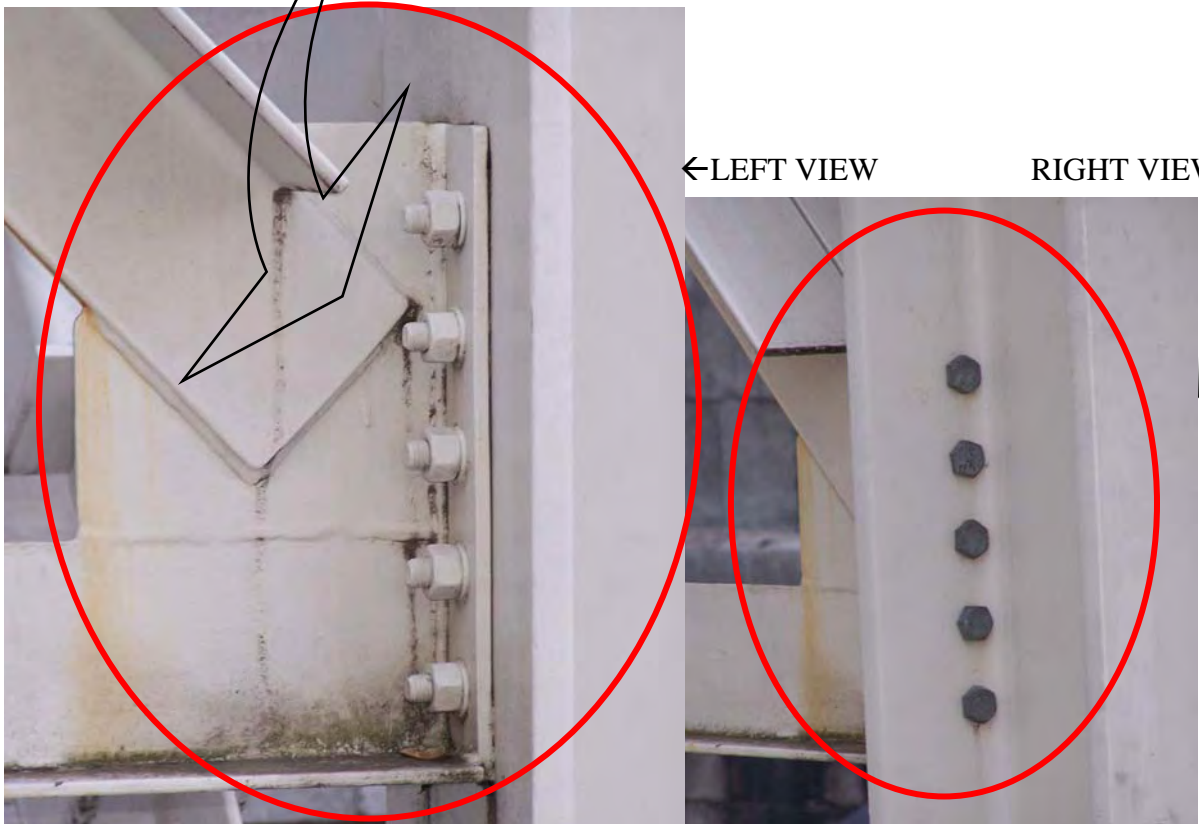
FIG. 25-1-14 Scales for structural drawings.

From “Engineering Drawing and Design” of Jensen Helsel





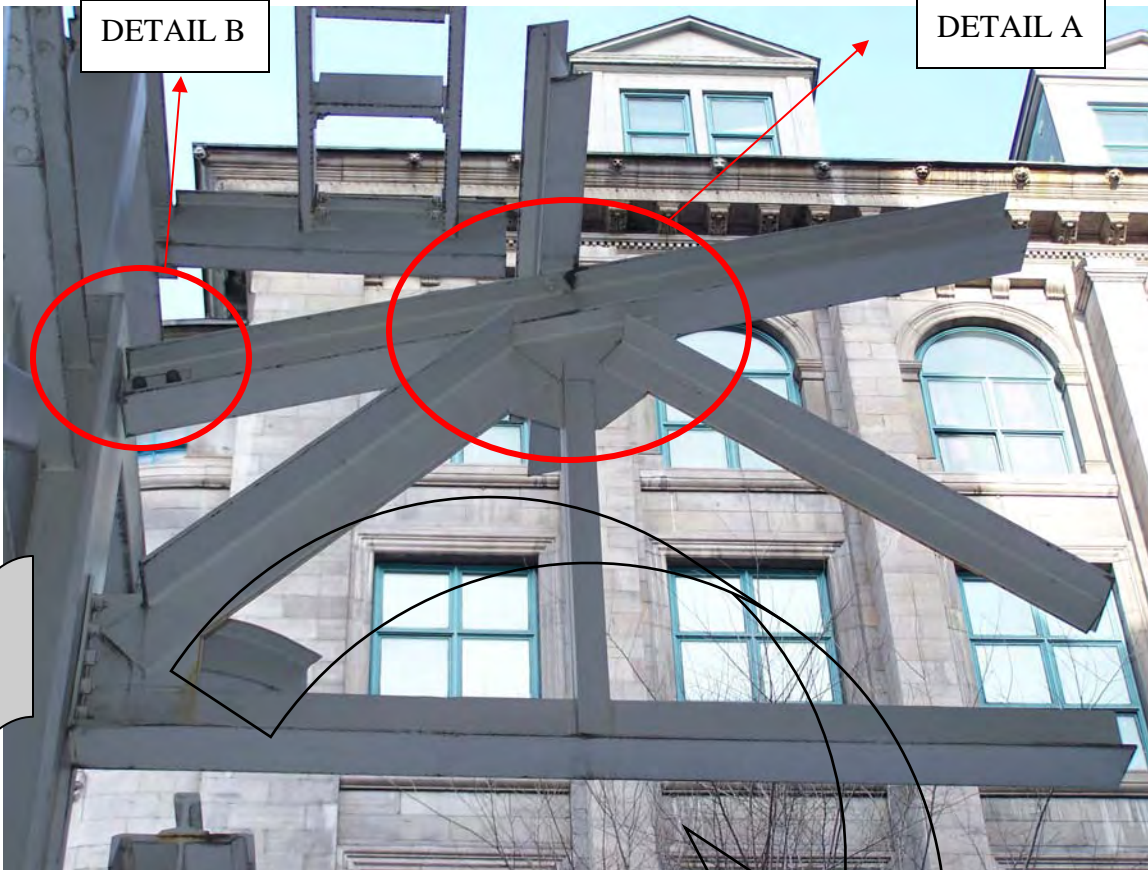
Front view



Back View

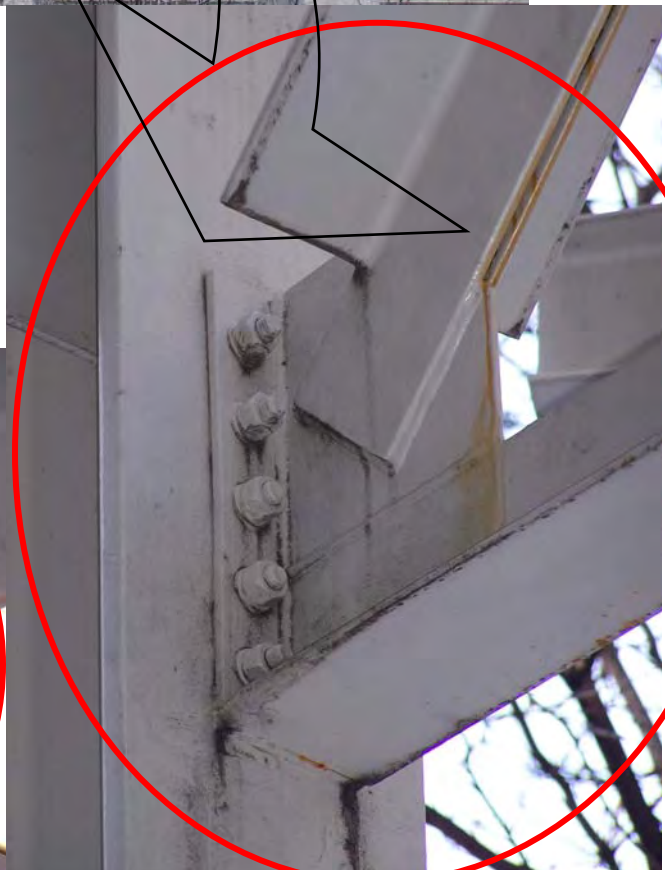
DETAIL B

DETAIL A



LEFT VIEW

RIGHT VIEW →





DETAIL A



DETAIL B



