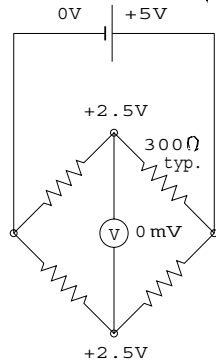
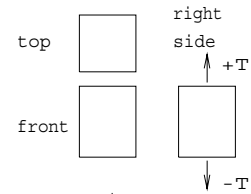
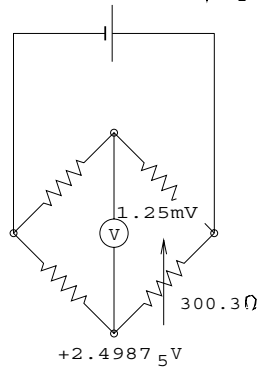
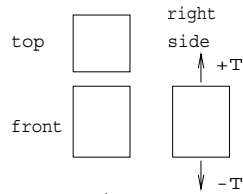


Sketch gage layout on typical specimen above bridge.

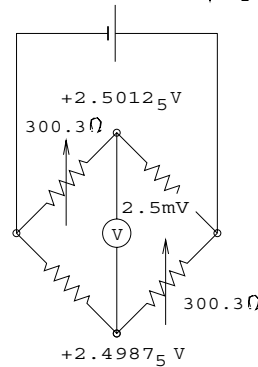
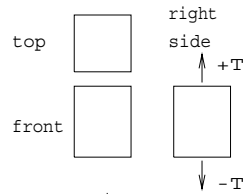
(26) Brdgs41m



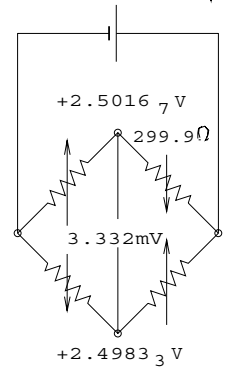
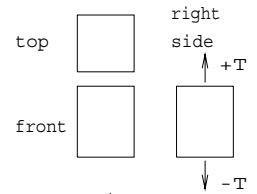
Balanced bridge



Single arm tensile



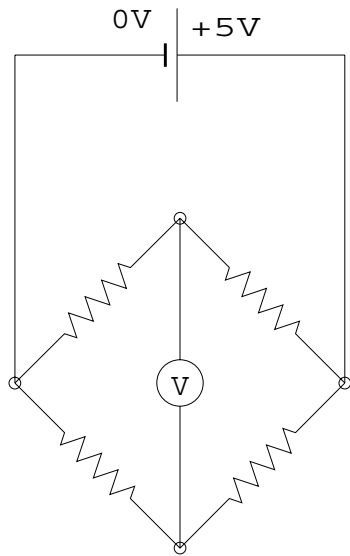
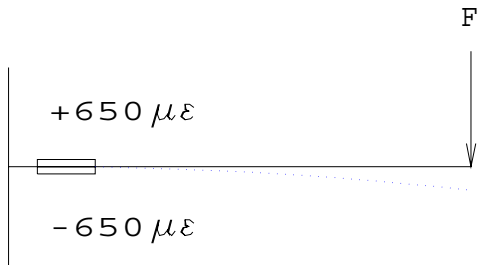
Double arm tensile



Four arm tensile/Poisson

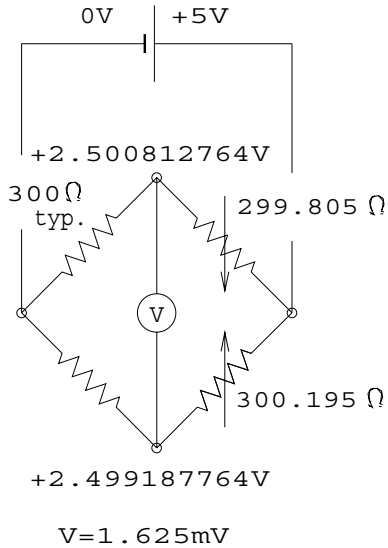
Map the resistor values.

Show active arms as $\uparrow \downarrow$



(26) Brdgs41u

Solution to Two Arm Bending at $+650 \mu\epsilon$
 Problem on (26)Brdgs41u



(26)Brdgs411

